

*Hardware for Professionals*

**hepo**

hepo

*Catalogue cum Price List*  
*effective July 2021*



# Index

Furniture Fittings	Page No.
Hinges	
Auto Closing Slide-on Regular Hinges	3
Auto Closing Slide-on Soft Close Hinges	4
Auto Closing Clip-on Soft Close Hinges	5
Flap Hinges	6
Butt Hinges	7-8
Drawer Slides	
Telescopic Channel (Regular)	9-10
Telescopic Channel (Silent)	11
Furniture Locks	
Bi-Fold Lift-Up	14
Gas Spring	15
Aluminum Profiles	16
Handles	17
Tower Bolt	18
Bed Fittings	19-20
Bathroom Accessories	21-24
Connecting Fittings	25-28

Screws	Page No.
Stainless Steel Screws	32
Carbon Steel Screws	33-35
Black Screws	36-37
Special Purpose Screws	38-41
Accessories	42

# Furniture Fittings



Reliable Concealed Hinges: **Auto Closing Slide-on Regular Hinges & Auto Closing Slide-on Soft Close Hinges** with Auto close as well as with Soft close feature tested.



Heavy Duty Drawer Runners: **Hepo Telescopic Drawer Runners** With Options for Zinc Coated and Black Painted Tested & Certified for 40,000 cycles.



Durable **Gas Spring for Overhead Cabinets**: Suitable for wooden or aluminum framed shutter Flap weight (including handle) carrying capacity of 3.2 kg to 35 kg. Tested & Certified for 50,000 cycles.



Butt Hinge option for **Non Bearing (Riveted)** as well as **Railway (Welded) Hinges**: High Weight carrying capacity up to 40 kg (per pair) Tested & Warranted for 2 years of functionality.

# Auto Closing Slide-on Regular Hinges



## Auto Closing Slide-on Regular Hinges



### Technical details:

- ▶ Concealed hinge with slide on assembly
- ▶ **Quality classification under EN 15570, Level 1**
- ▶ Tested & Certified for 20,000 Cycles
- ▶ For door thickness 14 - 25 mm
- ▶ Opening angle: 105°
- ▶ Cup diameter 35 mm
- ▶ Cup depth 11.5 mm
- ▶ Integrated overlay adjustment + 0.5 mm / - 2.5 mm
- ▶ Integrated depth adjustment + 2 mm / - 2 mm
- ▶ Height adjustment at mounting plate
- ▶ Hinge arm material: Steel, Nickel plated

### Minimum Reveal Per Door

Cup Distance C	Door thickness											
	14	15	16	17	18	19	20	21	22	23	24	25
3	0.04	0.12	0.23	0.38	0.59	0.85	1.18	1.61	2.22	2.96	3.76	4.6
4	0.04	0.11	0.22	0.37	0.56	0.81	1.11	1.49	1.99	2.63	3.36	4.15
4.5	0.04	0.11	0.22	0.36	0.55	0.79	1.08	1.45	1.91	2.5	3.2	3.96
5	0.04	0.11	0.21	0.36	0.54	0.77	1.06	1.41	1.84	2.39	3.04	3.77
6	0.04	0.1	0.2	0.34	0.52	0.74	1.01	1.33	1.73	2.21	2.79	3.46
7	0.04	0.1	0.2	0.33	0.5	0.71	0.97	1.27	1.64	2.07	2.59	3.2

## Auto Closing Slide-on Regular Hinges with Mounting Plate (2 hole)

### Please order:

- ▶ 2 Hinges
- ▶ 2 Mounting Plates (2 Hole)



Description (Retail Packing)	Unit	Article no.	PU	MRP/Pair
Auto Closing Slide-on Regular Hinges - 0 Crank with Mounting Plate (2 hole)	Pc	9284697+9284813	100	87
Auto Closing Slide-on Regular Hinges - 9.5 Crank with Mounting Plate (2 hole)	Pc	9284698+9284813	100	92
Auto Closing Slide-on Regular Hinges - 16 Crank with Mounting Plate (2 hole)	Pc	9284809+9284813	100	97

## Auto Closing Slide-on Regular Hinges with Mounting Plate (4 hole)

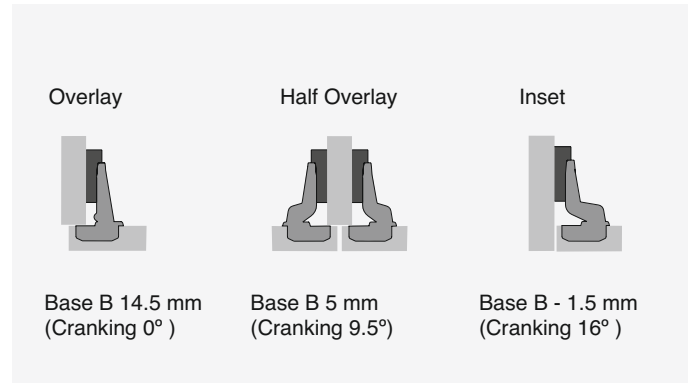
### Please order:

- ▶ 2 Hinges
- ▶ 2 Mounting Plates (4 Hole)



Description (Retail Packing)	Unit	Article no.	PU	MRP/Pair
Auto Closing Slide-on Regular Hinges - 0 Crank with Mounting Plate (4 hole)	Pc	9284697+ 9284814	100	87
Auto Closing Slide-on Regular Hinges - 9.5 Crank with Mounting Plate (4 hole)	Pc	9284698+ 9284814	100	92
Auto Closing Slide-on Regular Hinges - 16 Crank with Mounting Plate (4 hole)	Pc	9284809+ 9284814	100	97

## Auto Closing Slide-on Soft Close Hinges



### Technical details:

- ▶ Concealed hinge with slide on assembly
- ▶ **Quality classification under EN 15570, Level 1**
- ▶ Tested & Certified for 20,000 Cycles
- ▶ For door thickness 14 - 25 mm
- ▶ Opening angle: 105°
- ▶ Cup diameter 35 mm
- ▶ Cup depth 11.5 mm
- ▶ Integrated overlay adjustment + 0.5 mm / - 2.5 mm
- ▶ Integrated depth adjustment + 2 mm / - 2 mm
- ▶ Height adjustment at mounting plate
- ▶ Hinge arm material: Steel, Nickel plated

### Minimum Reveal Per Door

Cup Distance C	Door thickness											
	14	15	16	17	18	19	20	21	22	23	24	25
3	0.04	0.12	0.23	0.38	0.59	0.85	1.18	1.61	2.22	2.96	3.76	4.6
4	0.04	0.11	0.22	0.37	0.56	0.81	1.11	1.49	1.99	2.63	3.36	4.15
4.5	0.04	0.11	0.22	0.36	0.55	0.79	1.08	1.45	1.91	2.5	3.2	3.96
5	0.04	0.11	0.21	0.36	0.54	0.77	1.06	1.41	1.84	2.39	3.04	3.77
6	0.04	0.1	0.2	0.34	0.52	0.74	1.01	1.33	1.73	2.21	2.79	3.46
7	0.04	0.1	0.2	0.33	0.5	0.71	0.97	1.27	1.64	2.07	2.59	3.2

## Auto Closing Slide-on Soft Close Hinges with Mounting Plate (2 hole)



### Please order:

- ▶ 2 Hinges
- ▶ 2 Mounting Plates (2 Hole)

Description (Retail Packing)	Unit	Article no.	PU	MRP/Pair
Auto Closing Slide-on Soft Close Hinges - 0 Crank with mounting plate (2 hole)	Pc	9284810+9284813	100	159
Auto Closing Slide-on Soft Close Hinges - 9.5 Crank with mounting plate (2 hole)	Pc	9284811+9284813	100	164
Auto Closing Slide-on Soft Close Hinges - 16 Crank with mounting plate (2 hole)	Pc	9284812+9284813	100	169

## Auto Closing Slide-on Soft Close Hinges with Mounting Plate (4 hole)



### Please order:

- ▶ 2 Hinges
- ▶ 2 Mounting Plates (4 Hole)

Description (Retail Packing)	Unit	Article no.	PU	MRP/Pair
Auto Closing Slide-on Soft Close Hinges - 0 Crank with mounting plate (4 hole)	Pc	9284810+9284814	100	159
Auto Closing Slide-on Soft Close Hinges - 9.5 Crank with mounting plate (4 hole)	Pc	9284811+9284814	100	164
Auto Closing Slide-on Soft Close Hinges - 16 Crank with mounting plate (4 hole)	Pc	9284812+9284814	100	169

## Auto Closing Clip-on Soft Close Hinges



### Technical details:

- ▶ Material: Steel Nickel plated
- ▶ Concealed hinge with Clip on assembly
- ▶ **Quality Classification under EN 15570, Level 1**
- ▶ Available with integrated soft closing option
- ▶ For door thickness: 16- 24 mm
- ▶ Open angle: up to 105 °
- ▶ Cup diameter: 35 mm
- ▶ Cup depth: 11.5 mm
- ▶ Both mounting plate available with 2 holes and 4 holes
- ▶ Tested for 20,000 functional cycles

C-value	Door Thickness									
	B	16	17	18	19	20	21	22	23	24
3	0.4	0.6	0.8	1.2	1.6	2.2	2.9	3.7	4.6	
4	0.4	0.6	0.8	1.1	1.5	2.0	2.6	3.3	4.1	
5	0.4	0.6	0.8	1.1	1.4	1.8	2.4	3.0	3.8	
6	0.4	0.5	0.7	1.0	1.3	1.7	2.2	2.8	3.5	
7	0.3	0.5	0.7	1.0	1.3	1.6	2.1	2.6	3.2	

## Auto Closing Clip-on Soft Close Hinges with Mounting Plate (2 Hole)



Description (Retail Packing)	Unit	Article no.	PU	MRP/ Pair
Clip on Silent Hinges - 0 Crank - with Damper, Mounting Plate	Pc	9290745+9290750	100	229
Clip on Silent Hinges - 9.5 Crank - with Damper, Mounting Plate	Pc	9290746+9290750	100	235
Clip on Silent Hinges - 16 Crank - with Damper, Mounting Plate	Pc	9290747+9290750	100	241

## Auto Closing Clip-on Soft Close Hinges with Mounting Plate (4 Hole)



Description (Retail Packing)	Unit	Article no.	PU	MRP/ Pair
Clip on Silent Hinges - 0 Crank - with Damper, Mounting Plate	Pc	9290745+9290751	100	229
Clip on Silent Hinges - 9.5 Crank - with Damper, Mounting Plate	Pc	9290746+9290751	100	235
Clip on Silent Hinges - 16 Crank - with Damper, Mounting Plate	Pc	9290747+9290751	100	241

## Auto Closing Clip-on Soft Close Hinges with Mounting Plate (Eccentric)



Description (Retail Packing)	Unit	Article no.	PU	MRP/ Pair
Clip on Hinge - 0 Crank - with Damper, Mounting Plate	Pc	9290745+9290752	100	260
Clip on Hinge - 9.5 Crank - with Damper, Mounting Plate	Pc	9290746+9290752	100	266
Clip on Hinge - 16 Crank - with Damper, Mounting Plate	Pc	9290747+9290752	100	272

## Cover Cap



Product Description	Unit	Article no.	PU	MRP/Pc
Arm Cover for 0 Crank	Pc	9290753	100	5
Arm Cover for 9.5 / 16 Crank	Pc	9290754	100	5
Arm coverfor 0 Crank with hepo logo	Pc	9290753	100	5
Arm coverfor 9.5 / 16 Crank with hepo logo	Pc	9290754	100	5

## Flap Hinges



- ▶ Flap hinge for overlay flaps
- ▶ Separate installation of bottom panel and flap element
- ▶ Flap alignment through adjustment of height, sides and depth
- ▶ Same drilling sizes in bottom panel and flap elements
- ▶ Hole drilling concealed by rim on both parts
- ▶ Without height adjustment, bottom panel and flap are flush on the inside when open
- ▶ Can only be used in conjunction with flap stays
- ▶ Material Used: Zinc Alloy, nickel plated

**Set Includes:** 1 Flap Hinge with 6 Screws(M3\*15)

Flap thickness TD MM	Minimum Reveal SF MM
16	1.0
17	2.0
18	3.0
19	3.5

Description	Unit	Article No.	PU	MRP/Pc
Hepo Flap Hinge	Pc	9297879	200	195





## Hepo Butt Hinges

### Riveted Type

#### Stainless Steel Riveted Type



#### Features:

- ▶ Loading Capacity up to 40 kg / pair
- ▶ DIN Left / Right Usable
- ▶ Mostly preferred for Steel / wood & Aluminum profile doors
- ▶ Area of application: Light Main and Internal doors
- ▶ Warranty : 2 years



#### Technical details:

- ▶ Ø Barrel diameter: 12 mm
- ▶ Leaf thickness: 2.5 mm
- ▶ Milling for doors: 2 / 2.5 mm
- ▶ Available Sizes: 3"x2"x2 mm / 4"x3"x2.5 mm / 5"x3"x2.5 mm
- ▶ Base Material: Stainless Steel
- ▶ Edge: Square
- ▶ Finish Available: Stainless Steel Satin

S.No.	Description	Size mm (inch)	Unit	Article No.	PU	MRP / Pair
1	SS 76x50x2 mm (3"x2"x2 mm) (Hole Pattern: C)		Pair	9268550	01	265
2	SS 102x76x2.5 mm (4"x3"x2.5 mm) (Hole Pattern: Z)		Pair	9268395	01	373
3	SS 127x76x2.5 mm (5"x3"x2.5 mm) (Hole Pattern: Z)		Pair	9268396	01	435

### Recommended Stainless Steel Screws:



S.No.	Description	Size mm (inch)	Unit	Article No.	PU	MRP / Pc
1	SS screw CSK PZ2 5.0X30mm		Pc	9277146	500	3.78
2	SS screw CSK PZ2 5.0X40mm		Pc	9277147	400	4.82

# Butt Hinges

## Welded Type

hepo



### Stainless Steel Welded Type (Railway Hinges)



#### Features:

- ▶ Recommended for wooden / aluminium / framed doors.
- ▶ Area of application: Main & Internal doors of an apartment / building
- ▶ Weight capacity: 40 Kg/Pair
- ▶ Warranty : 2 years

#### Technical details:

- ▶ Leaf Thickness - 1.7 / 2 / 2.5 mm
- ▶ Edge - Square Edge
- ▶ Pin Dia - 4 & 5.6 mm
- ▶ DIN Leaf/Right Usage
- ▶ Available Sizes - 3x14 / 4x14 / 5x14 / 3x12 / 4x12 / 5x12
- ▶ Finish Available - SS Satin
- ▶ No. of Holes - 6/8

S.No.	Description Size mm (inch)	Unit	Article No.	PU	MRP/ Pair
1	Butt Hinge SS 75x48x2 mm (3"x2"x2 mm) (3x14)	Pair	9278616	20	135
2	Butt Hinge SS 100x58x2 mm (4"x2.5"x2 mm) (4x14)	Pair	9278617	12	215
3	Butt Hinge SS 125x64x2 mm (5"x2.5"x2 mm) (5x14)	Pair	9278618	10	280
4	Butt Hinge SS 75x50x2.5 mm (3"x2"x2.5 mm) (3x12)	Pair	9278619	20	165
5	Butt Hinge SS 100x60x2.5 mm (4"x2.3"x2.5 mm) (4x12)	Pair	9278620	12	250
6	Butt Hinge SS 125x67x2.5 mm (5"x2.6"x2.5 mm) (5x12)	Pair	9278621	10	330

### Recommended Stainless Steel Screws:



S.No.	Description Size mm (inch)	Unit	Article No.	PU	MRP / Pc
1	SS screw CSK PZ2 5.0X30mm	Pc	9277146	500	3.78
2	SS screw CSK PZ2 5.0X40mm	Pc	9277147	400	4.82

# Hepo Telescopic Channel (Regular)

## Heavy Duty Drawer Runners



### Telescopic Channel (Regular) - Zinc / Black



#### Technical details:

- ▶ Full extension normal closing ball bearing runner
- ▶ Better designed tracks creates ease of operation & better dynamic load behaviour
- ▶ Installation width required: 12.8 mm
- ▶ Available channel height: 45 mm
- ▶ Available channel length: 250 mm – 550 mm
- ▶ Guaranteed up to 40,000 functional cycles
- ▶ Quality classification: EN 15570, Level 1
- ▶ Material used: Steel
- ▶ Finish: Zinc plated / Black

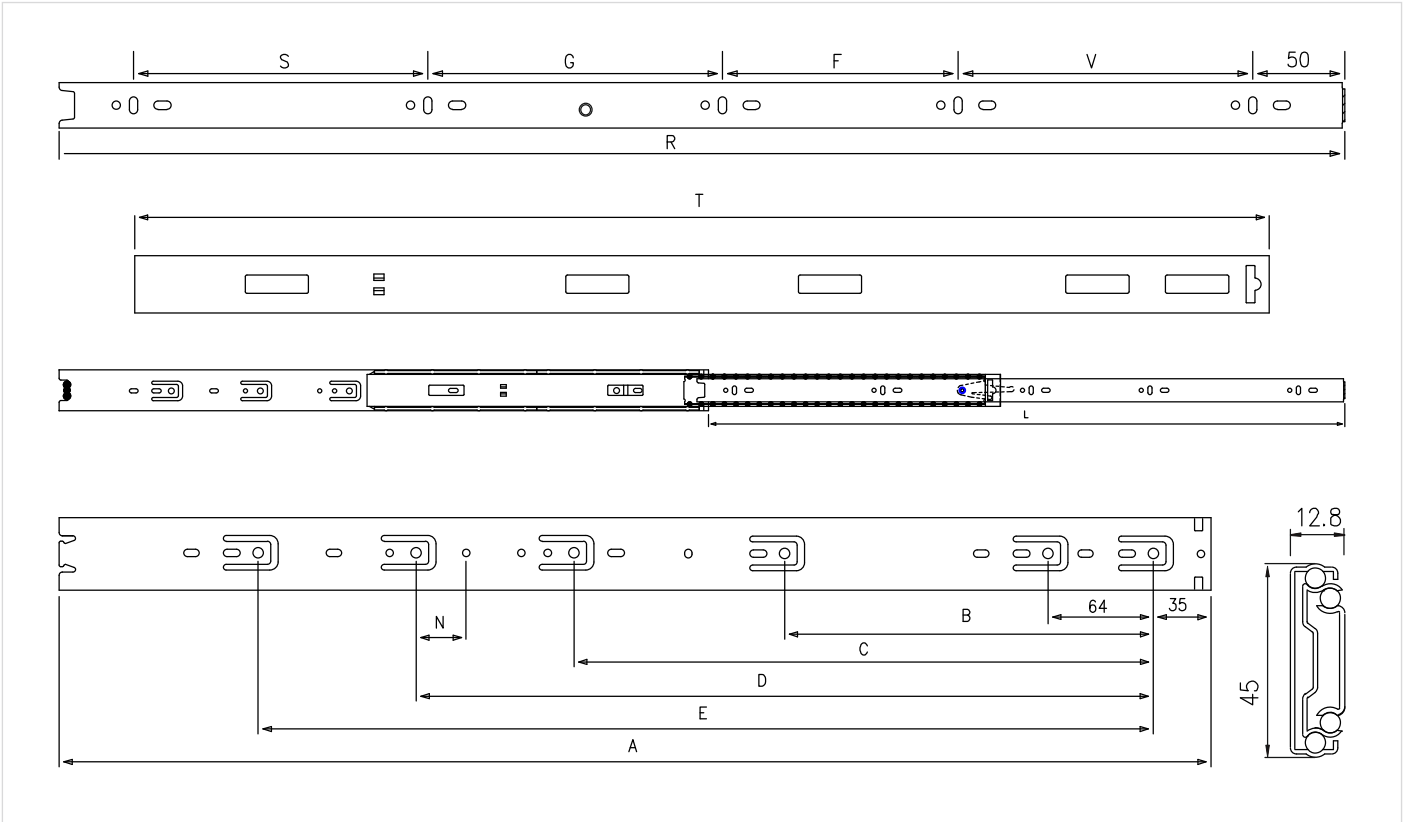
Description		Size	Unit	Article no	PU	MRP / Pair
Hepo Regular Telescopic channel - Zinc		10"- 250 mm	Pair	9298666	10	259
Hepo Regular Telescopic channel - Zinc		12"- 300 mm	Pair	9298668	10	289
Hepo Regular Telescopic channel - Zinc		14"- 350 mm	Pair	9298669	10	319
Hepo Regular Telescopic channel - Zinc		16"- 400 mm	Pair	9298670	10	349
Hepo Regular Telescopic channel - Zinc		18"- 450 mm	Pair	9298701	10	379
Hepo Regular Telescopic channel - Zinc		20"- 500 mm	Pair	9298702	10	419
Hepo Regular Telescopic channel - Zinc		22"- 550 mm	Pair	9298703	10	459

Description		Size	Unit	Article no	PU	MRP / Pair
Hepo Regular Telescopic channel - Black		10"- 250 mm	Pair	9300364	10	259
Hepo Regular Telescopic channel - Black		12"- 300 mm	Pair	9300365	10	289
Hepo Regular Telescopic channel - Black		14"- 350 mm	Pair	9300366	10	319
Hepo Regular Telescopic channel - Black		16"- 400 mm	Pair	9300367	10	349
Hepo Regular Telescopic channel - Black		18"- 450 mm	Pair	9300368	10	379
Hepo Regular Telescopic channel - Black		20"- 500 mm	Pair	9300369	10	419
Hepo Regular Telescopic channel - Black		22"- 550 mm	Pair	9300370	10	459

# Hepo Telescopic Channel (Regular)



## Drilling Pattern



Length	(Hole Pattern)												
	A	B	C	D	N	E	T	V	F	G	S	R	L
250	250	160	/	/	/	/	233	169	/	/	/	248	250
300	300	224	/	/	/	/	283	96	128	/	/	298	300
350	350	/	/	224	30.4	/	333	128	128	/	/	348	350
400	400	/	224	288	/	/	383	128	192	/	/	398	400
450	450	224	352	/	/	/	433	160	192	/	/	448	450
500	500	224	352	/	/	/	483	192	224	/	/	498	500
550	550	224	352	416	/	/	533	224	224	/	/	548	550
600	600	224	352	480	/	/	583	224	288	/	/	598	600

# Hepo Telescopic Channel (Silent)

## Heavy Duty Drawer Runners with Silent System



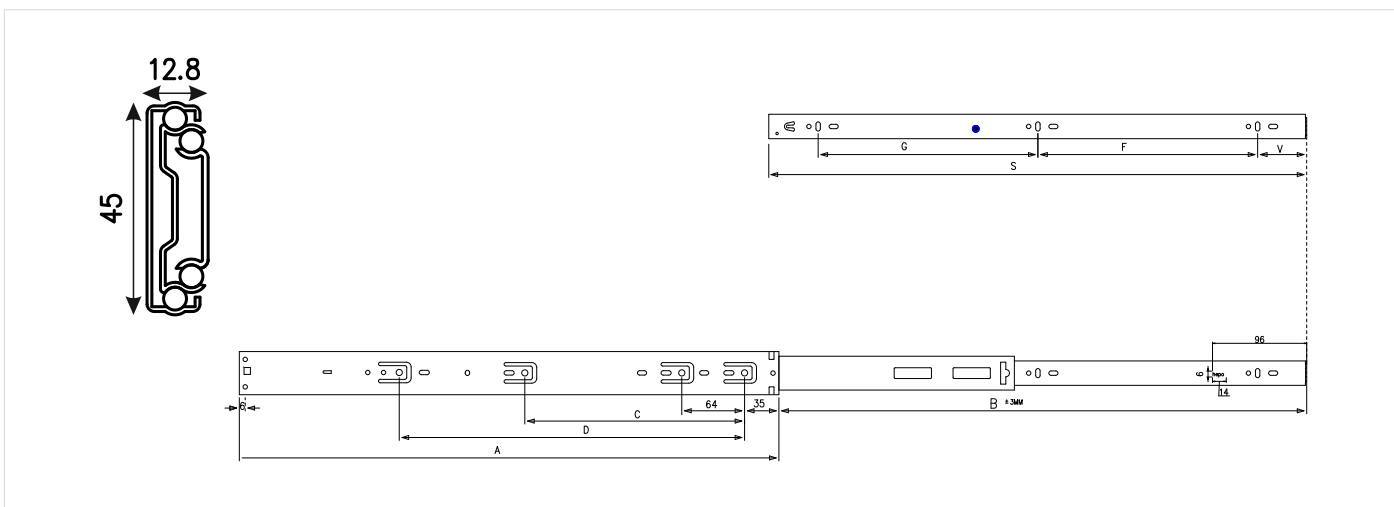
### Telescopic Channel (Silent)



**Features:**

- ▶ Full extension ball bearing drawer slide with Silent System
- ▶ Installation width required: 12.8 mm
- ▶ Available channel height: 45 mm
- ▶ Available channel length: 300 - 550 mm
- ▶ Finish: Zinc plated
- ▶ Guaranteed up to 40,000 functional cycles

### Drilling Pattern



Length	(Hole pattern)							
	A	B	C	D	V	F	G	S
300	300	300			50	96	96	283
350	350	350		160	50	128	96	333
400	400	400		224	50	128	160	383
450	450	450	224		50	160	160	433
500	500	500	224	320	50	160	224	483

Description	Size	Unit	Article no	PU	MRP / Pair
Hepo Telescopic Channel with silent system / Zinc	300 mm	Pair	9293951	10	599
Hepo Telescopic Channel with silent system / Zinc	350 mm	Pair	9293903	10	649
Hepo Telescopic Channel with silent system / Zinc	400 mm	Pair	9293904	10	689
Hepo Telescopic Channel with silent system / Zinc	450 mm	Pair	9293905	10	739
Hepo Telescopic Channel with silent system / Zinc	500 mm	Pair	9293906	10	769
Hepo Telescopic Channel with silent system / Zinc	550 mm	Pair	9295964	10	849

# Furniture Locks

## Economic Multipurpose Locks

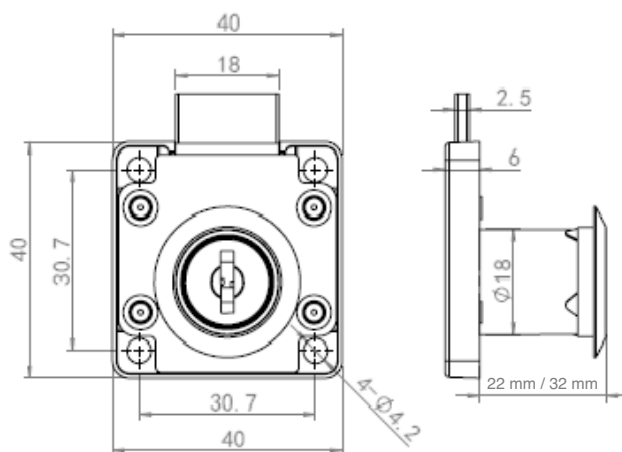


### Economic Multipurpose Locks

Multipurpose locks throw a bolt / tongue out allowing the door to be locked when closed. This locks can be used in a number of applications particularly in any cabinet & drawer construction. It can secure the cabinet door and requires a key for the cabinet to be opened. These locks are ideal for office environments as they allow to lock private & confidential papers securely. In addition to this, they are also suitable for homes & can keep valuables, private & confidential papers or snacks locked securely in your cupboard out of reach of young children!

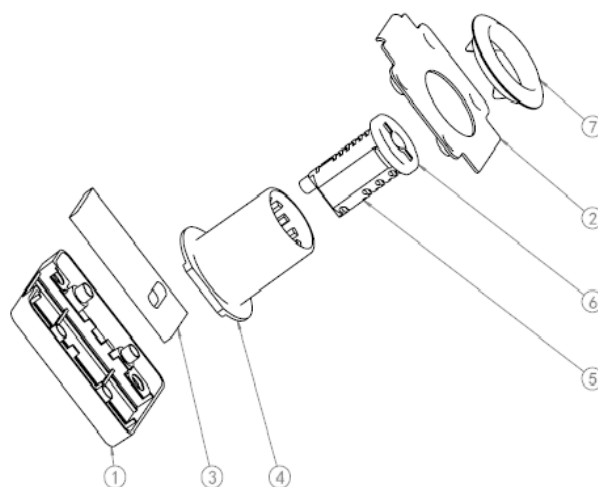
#### Technical details:

- ▶ Adjustable for left/right-hand operation
- ▶ Available for 22 mm / 32 mm panel thickness
- ▶ Complete with rosette
- ▶ Available with max. 120 Key Combinations
- ▶ Available with 2 iron keys
- ▶ Tested for 30000 functional cycles
- ▶ Material: Zinc & Steel



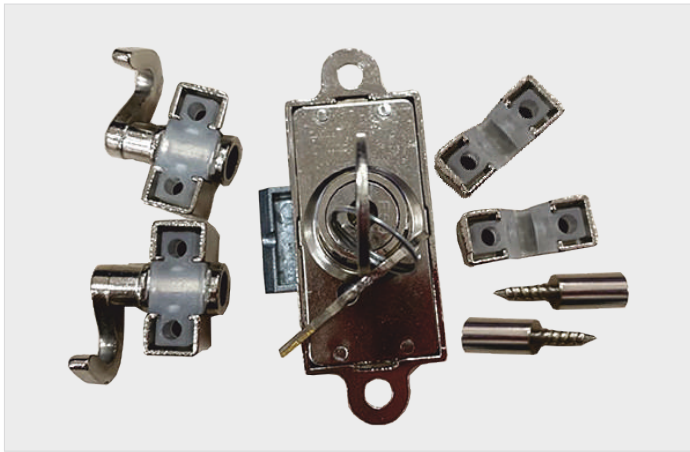
#### Set Comprises

Sr No:	Description	Quantity
1	Based Cover	1
2	Front Cover	1
3	Bolt	1
4	Cylinder Cover	1
5	Cylinder	1
6	Cylinder Front Cover	1
7	Ring	1



Description	Unit	Article no	PU	MRP/ PC
Economic MP Lock 120 KC, 22 mm	Pc	9287295	120	127
Economic MP Lock 120 KC, 32 mm	Pc	9291595	120	148

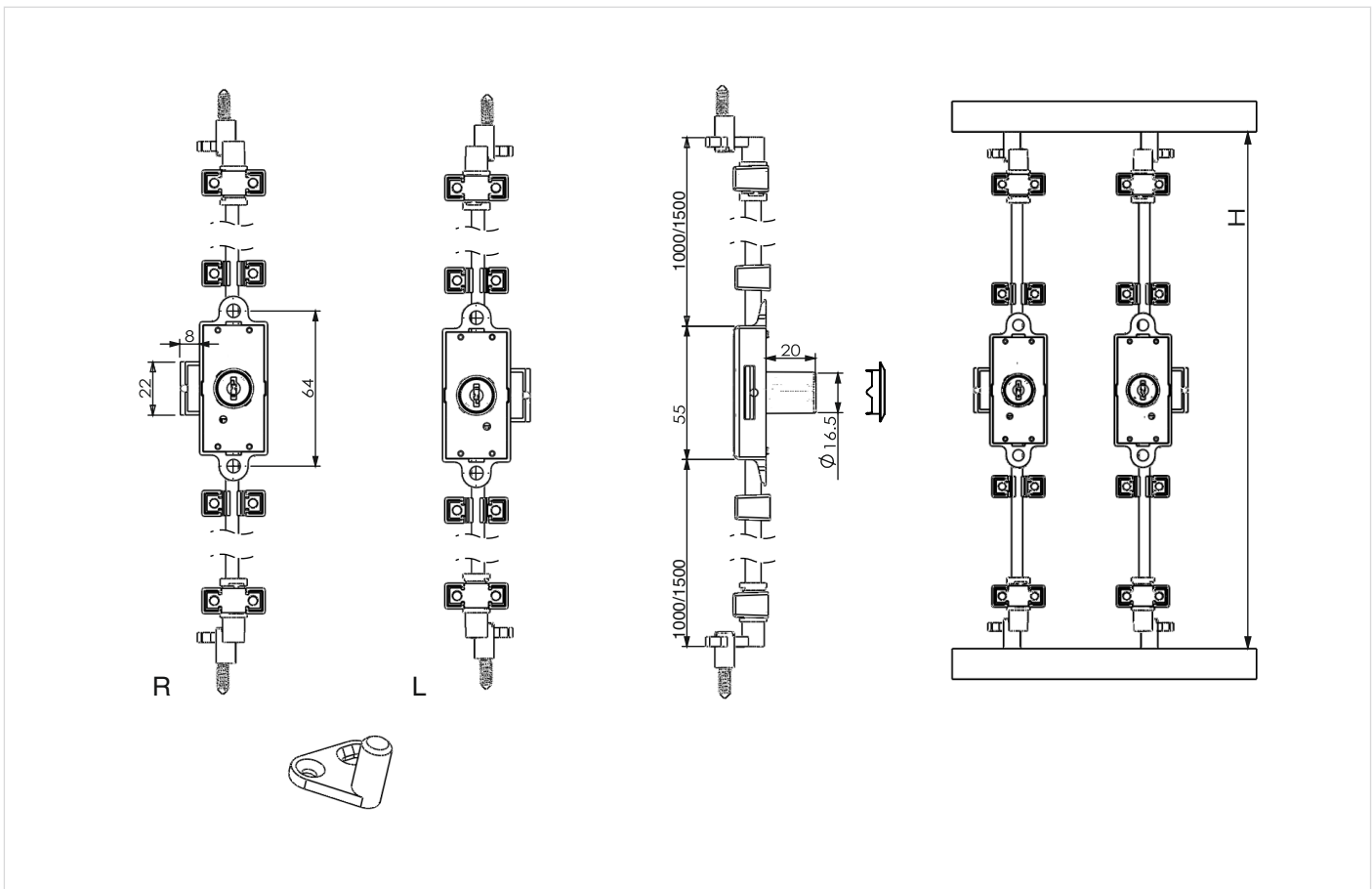
**Espagnolette Locks**



- Technical details:
- ▶ Three-way locking system for cabinet doors
  - ▶ Usable for both left & right
  - ▶ Used for 20 mm door thickness
  - ▶ Available with rosette
  - ▶ Barrel dia.: 16.5 mm
  - ▶ Available rod length: 1000 mm & 1500 mm
- Set contains:
- ▶ 1 espagnolette lock, for left / right -hand operation
  - ▶ 1 rosette
  - ▶ 1 pair of locking hooks, left / right
  - ▶ 2 rod saddles
  - ▶ 2 stop pin
  - ▶ 2 keys

Note: Order rods as per cabinet height

**Installation Diagram**



Product description	Unit	Article no.	PU	MRP/Unit
Espagnolette Lock D16/20	Set	9299249	10	565
Espagnolette Lock Rod 6/5 1m Nickel	Pc	9299283	10	200
Espagnolette Lock Rod 6/5 1.5m Nickel	Pc	9299284	10	325

# Advanced Lift-up

## Bi-Fold Lift-up



### Bi-Fold Lift-up



#### Technical details:

- ▶ Bi-fold lift-up for wooden front panel with high performance & smooth operation
- ▶ Recommended for wooden front panel or Aluminium profile with 55 mm width
- ▶ Stops at any opening position
- ▶ Available with silent opening & closing system
- ▶ Available with three dimensional front panel adjustment
- ▶ Recommended to use with concealed furniture hinges with 110° opening angle
- ▶ Recommended cabinet outer to outer height: 700-850 mm
- ▶ Recommended cabinet width:  $\leq 900$  &  $\leq 1200$  mm
- ▶ Recommended front panel thickness: 16-18 mm
- ▶ Maximum weight capacity: 8 Kg for

Description (Retail Packing)	Article no.
Hepo Bi-fold Lift-up Version 8, Max 8 KG	9299178

- ▶ Maximum weight capacity: 10 Kg for

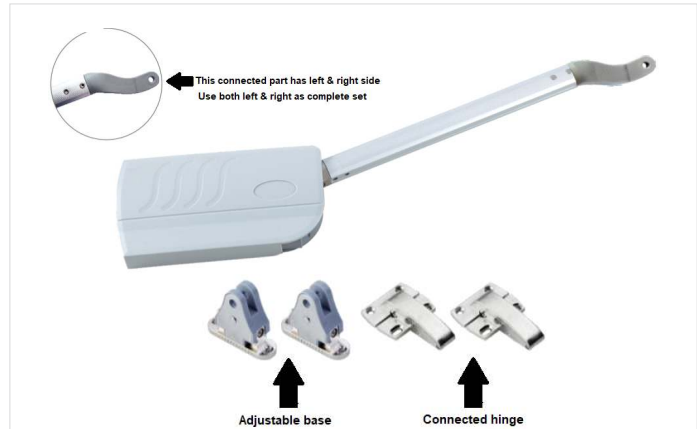
Description (Retail Packing)	Article no.
Hepo Bi-fold Lift-up Version 10, Max 10 KG	9299179

- ▶ Front panel will sprung open if fingers get caught between two panels
- ▶ No protruding parts
- ▶ Reliable & smooth performance within a wide temperature range of 0°C to 40 °C
- ▶ Materials used: Zinc alloy, Plastic & Iron
- ▶ Finish: Nickel plating & Chrome plating

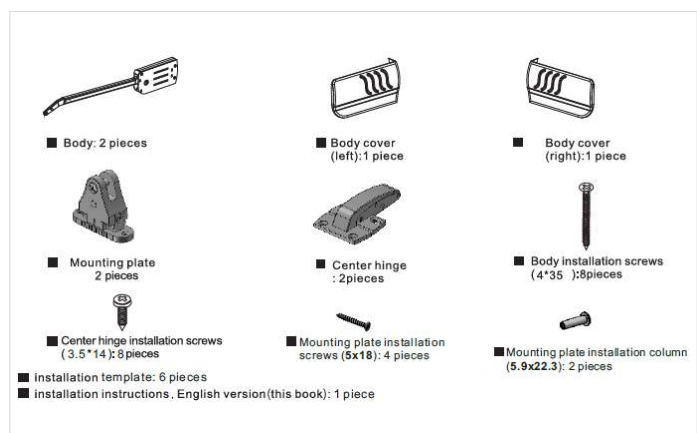
### Installation Drawing

Cabinet Height H	Installation Size M	Installation Size B	Alu. Bar length K
700	100	213	300
750	120	208	300
800	200	263	300
850	250	288	300

Description (Retail Packing)	Unit	Article no.	PU	MRP/Set
Hepo Bi-fold Lift-up Version 8, Max 8 KG	Set	9299178	1	6,999
Hepo Bi-fold Lift-up Version 10, Max 10 KG	Set	9299179	1	6,999



### Set Contains





# Gas Spring

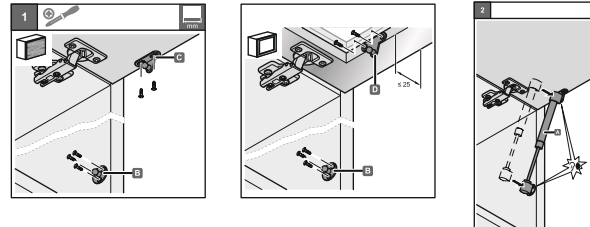
Guaranteed for 50,000 cycles



## Gas Spring

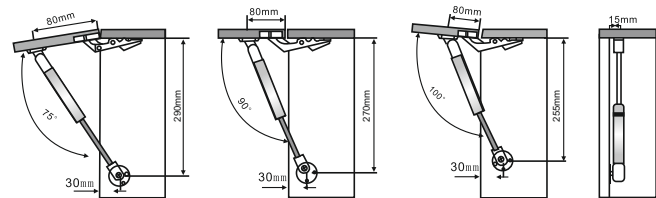
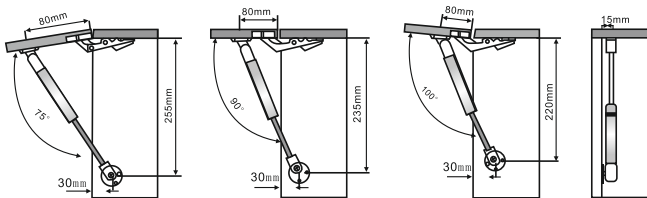


- ▶ Suitable for wooden or aluminum framed shutter
- ▶ Needs auto-closing hinges fitted in the shutter for operation
- ▶ Flap weight (including handle) carrying capacity: 3.2 Kg to 35 kg
- ▶ Spring force : 80N-350N
- ▶ Gas Spring dimension : 9 inch (270 mm) / 12 inch (301 mm)
- ▶ Performance temperature range of +45°C to -25°C
- ▶ **Tested for 50,000 cycles by SGS, Switzerland**



Gas Spring dimension : 9 inch (270 mm)

Gas Spring dimension : 12 inch (301 mm)



### Maximum Door Weight

(kg) \ (mm)	75°				90°				100°			
	300	400	500	600	300	400	500	600	300	400	500	600
60N	3.3kg	2.8kg	2kg	1.8kg	3.1kg	2.6kg	1.8kg	1.4kg	2.9kg	2.4kg	1.6kg	1.2kg
80N	4.3kg	3.5kg	2.6kg	2kg	4.1kg	3.3kg	2.4kg	1.8kg	3.9kg	3.1kg	2.2kg	1.6kg
100N	5kg	4.1kg	3.2kg	2.5kg	4.8kg	4kg	3kg	2.3kg	4.6kg	3.8kg	2.8kg	2kg
120N	5.7kg	4.7kg	3.8kg	3kg	5.5kg	4.5kg	3.4kg	2.8kg	5.3kg	4.3kg	3.3kg	2.6kg
150N	6.5kg	5.5kg	4.7kg	3.7kg	6.2kg	5.3kg	4.5kg	3.5kg	6kg	5.1kg	4.3kg	3.3kg
200N	9.3kg	7.5kg	5.5kg	4.8kg	9.1kg	7.3kg	5.3kg	4.6kg	8.9kg	7.1kg	5.1kg	4.4kg
250N		9.7kg	8kg	5.5kg		9.5kg	7.8kg	5.3kg		9.3kg	7.6kg	5.1kg
300N		12.2kg	9.3kg	7.7kg		12kg	9.1kg	7.5kg		11.8kg	8.9kg	7.3kg
350N		15.8kg	10kg	9.2kg		15.6kg	9.8kg	9kg		15.3kg	9.6kg	8.7kg

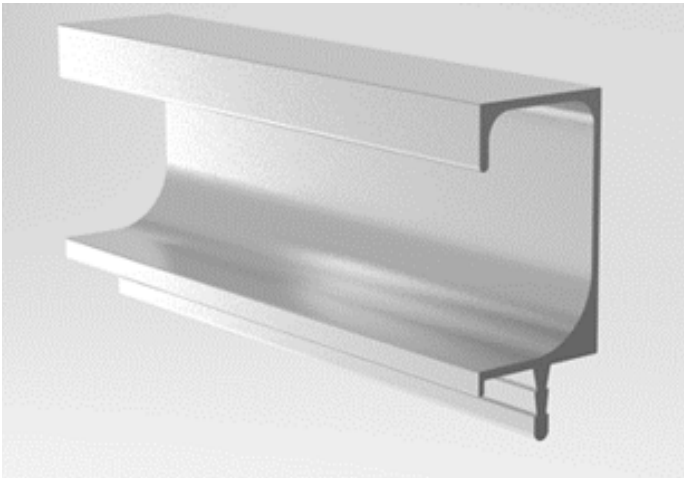
Gas Springs for Overheads - 9 inch	Unit	Article No.	PU	MRP/Pair	Gas Springs for Overheads - 12 inch	Unit	Article No.	PU	MRP/Pair
Gas spring Capacity - 8 KG / 9 inch	Pair	9289456	1	278	Gas spring Capacity - 8 KG / 12 inch	Pair	9289474	1	338
Gas spring Capacity - 10 KG / 9 inch	Pair	9289457	1	278	Gas spring Capacity - 10 KG / 12 inch	Pair	9289475	1	338
Gas spring Capacity - 12 KG / 9 inch	Pair	9289458	1	278	Gas spring Capacity - 12 KG / 12 inch	Pair	9289476	1	338
Gas spring Capacity - 15 KG / 9 inch	Pair	9289469	1	278	Gas spring Capacity - 15 KG / 12 inch	Pair	9289477	1	338
Gas spring Capacity - 20 KG / 9 inch	Pair	9289470	1	278	Gas spring Capacity - 20 KG / 12 inch	Pair	9289478	1	338
Gas spring Capacity - 25 KG / 9 inch	Pair	9289471	1	278	Gas spring Capacity - 25 KG / 12 inch	Pair	9289479	1	338
Gas spring Capacity - 30 KG / 9 inch	Pair	9289472	1	278	Gas spring Capacity - 30 KG / 12 inch	Pair	9289481	1	338
Gas spring Capacity - 35 KG / 9 inch	Pair	9289473	1	278	Gas spring Capacity - 35 KG / 12 inch	Pair	9289482	1	338

# Aluminium Profile

Silver Anodized Aluminium Profile for Furniture Fronts

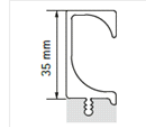


## Handle Profile



### G-Handle Profile

- ▶ Material Used: Anodized Aluminium
- ▶ For wood thickness 19 mm
- ▶ Profile Height: 35 mm
- ▶ Profile Length: 3000 mm
- ▶ Finish: Silver



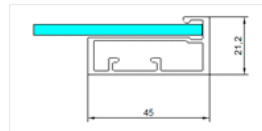
Description	Size	Unit	Article No.	PU	MRP/Pc
G Handle Profile 3000 mm SA	35 mm (H) X 3000 mm (L)	Pc	5211017	8	1,149

## Straight Frame Profile



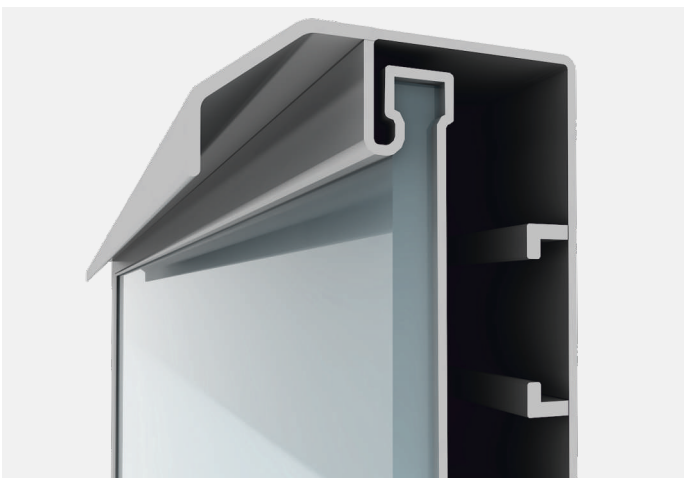
### 45 mm Straight Frame Profile

- ▶ Material Used: Anodized Aluminium
- ▶ Profile Width: 45 mm
- ▶ Profile Length: 3000 mm
- ▶ For glass thickness: 4 mm
- ▶ Finish: Silver
- ▶ Supplied with sealing strip for 4 mm glass



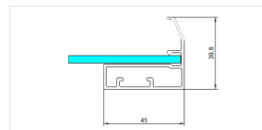
Description	Size (W)	Unit	Article No.	PU	MRP/Pc
Alu Profile 45 mm Straight 3000 mm SA	45 mm	Pc	5211018	4	1,579

## Straight Frame Profile with Handle



### 45 mm Straight Frame Profile with F Handle

- ▶ Material Used: Anodized Aluminium
- ▶ Profile Width: 45 mm
- ▶ Profile Length: 3000 mm
- ▶ For glass thickness: 4 mm
- ▶ Finish: Silver
- ▶ Supplied with sealing strip for 4 mm glass












Description	Size (W)	Unit	Article No.	PU	MRP/Pc
Alu Profile 45 mm Straight with F Handle 3000 mm SA	45 mm	Pc	5211019	4	1.819



Description	Unit	Article No.	PU	MRP/Set
Angle Connector Set (For all aluminum profiles) 1 Set Consists of 4 connectors & 8 screws	Set	13684	20	110

# Handles



Sr. No.	Description	Finish	Article No.	Hole Distance	Unit	PU	MRP/Pc
1.		Nickel Matt	1180122	96	Pc	200	63
		Nickel Matt	1180121	128	Pc	150	95
2.		Nickel Matt	1180167	96	Pc	200	75
		Nickel Matt	1180166	128	Pc	125	111
3.		Nickel Matt	1161173	96	Pc	60	82
		Nickel Matt	1161167	128	Pc	50	122
4.		Nickel Matt	9220976	96	Pc	50	69
		Nickel Matt	9220978	128	Pc	50	108
5.		Bright Chrome	9220975	96	Pc	50	62
		Bright Chrome	9220977	128	Pc	50	99
6.		Nickel Matt	9220980	96	Pc	50	64
		Nickel Matt	9220982	128	Pc	50	112
7.		Bright Chrome	9220979	96	Pc	50	58
		Bright Chrome	9220981	128	Pc	50	103
8.		Brushed Silver Anodized	9310024	224	Pc	72	210
9.		Matt Black	9297998	128	Pc	1	95

**Note:** For more handles refer to [Handlesfor99.com](http://Handlesfor99.com)

# Tower Bolt

## Aluminium & Brass Tower Bolt For Doors



Sr. No.		Description	Material	Finish	Rod dia. (in mm)	Article No.	Size (in mm)	Unit	PU	MRP/Pc
1		Towerbolt ALU-D18	Aluminium	Stainless Steel	9.5	9291322	100	Pc	12	158
2		Towerbolt ALU-D18	Aluminium	Stainless Steel	9.5	9291323	150	Pc	12	198
3		Towerbolt ALU-D18	Aluminium	Stainless Steel	9.5	9291324	200	Pc	12	235
4		Towerbolt ALU-D18	Aluminium	Stainless Steel	9.5	9291325	250	Pc	12	278
5		Towerbolt ALU-D18	Aluminium	Stainless Steel	9.5	9291326	300	Pc	12	322
1		Towerbolt ALU-D18	Aluminium	Antique Brass	9.5	9291327	100	Pc	12	195
2		Towerbolt ALU-D18	Aluminium	Antique Brass	9.5	9291328	150	Pc	12	240
3		Towerbolt ALU-D18	Aluminium	Antique Brass	9.5	9291329	200	Pc	12	285
4		Towerbolt ALU-D18	Aluminium	Antique Brass	9.5	9291330	250	Pc	12	335
5		Towerbolt ALU-D18	Aluminium	Antique Brass	9.5	9291331	300	Pc	12	385
1		Towerbolt ALU-D25	Aluminium	Stainless Steel	9.5	9291332	100	Pc	12	175
2		Towerbolt ALU-D25	Aluminium	Stainless Steel	9.5	9291333	150	Pc	12	220
3		Towerbolt ALU-D25	Aluminium	Stainless Steel	9.5	9291334	200	Pc	12	260
4		Towerbolt ALU-D25	Aluminium	Stainless Steel	9.5	9291335	250	Pc	12	310
5		Towerbolt ALU-D25	Aluminium	Stainless Steel	9.5	9291336	300	Pc	12	355
1		Towerbolt ALU-D25	Aluminium	Antique Brass	9.5	9291337	100	Pc	12	212
2		Towerbolt ALU-D25	Aluminium	Antique Brass	9.5	9291338	150	Pc	12	268
3		Towerbolt ALU-D25	Aluminium	Antique Brass	9.5	9291339	200	Pc	12	312
4		Towerbolt ALU-D25	Aluminium	Antique Brass	9.5	9291340	250	Pc	12	368
5		Towerbolt ALU-D25	Aluminium	Antique Brass	9.5	9291341	300	Pc	12	425
1		Towerbolt ALU-ISI-10	Aluminium	Aluminium Anodized	10	9291362	100	Pc	12	67
2		Towerbolt ALU-ISI-10	Aluminium	Aluminium Anodized	10	9291364	150	Pc	12	90
3		Towerbolt ALU-ISI-10	Aluminium	Aluminium Anodized	10	9291365	200	Pc	12	114
4		Towerbolt ALU-ISI-10	Aluminium	Aluminium Anodized	10	9291366	250	Pc	12	137
5		Towerbolt ALU-ISI-10	Aluminium	Aluminium Anodized	10	9291367	300	Pc	12	162
1		Towerbolt ALU-ISI-10	Aluminium	Anodized Stainless Steel	10	9291368	100	Pc	12	80
2		Towerbolt ALU-ISI-10	Aluminium	Anodized Stainless Steel	10	9291369	150	Pc	12	110
3		Towerbolt ALU-ISI-10	Aluminium	Anodized Stainless Steel	10	9291370	200	Pc	12	138
4		Towerbolt ALU-ISI-10	Aluminium	Anodized Stainless Steel	10	9291371	250	Pc	12	168
5		Towerbolt ALU-ISI-10	Aluminium	Anodized Stainless Steel	10	9291372	300	Pc	12	198
1		Towerbolt BRS-D25	Brass	Polished Brass	9	9291342	100	Pc	12	470
2		Towerbolt BRS-D25	Brass	Polished Brass	9	9291343	150	Pc	12	670
3		Towerbolt BRS-D25	Brass	Polished Brass	9	9291344	200	Pc	12	880
4		Towerbolt BRS-D25	Brass	Polished Brass	9	9291345	250	Pc	12	1,090
5		Towerbolt BRS-D25	Brass	Polished Brass	9	9291346	300	Pc	12	1,310



## Bed Fittings

Hepo's range of Bed Storage Systems addresses the need of space-efficiency. It offers a complete and effective solution for accessing the storage spaces below the heavy mattresses with ease. Most Indian households store bed linen, pillows & blankets which are required for seasonal purposes underneath their mattresses in the bed storage.

Hepo's Bed Fittings allow to access the storages with ease and a swift single handed lift movement. The opening angle of the fitting

is also engineered to provide maximum access to the storage space from all sides of the bed.

The Bed Lift Storage System is the answer to all storage needs; it is a smart solution for turning a cluttered master bedroom into a relaxing retreat which allows Complete Opening Function for Ergonomical needs. It is designed specially keeping in mind the current Indian housing scenario and is the perfect way to add more usable living space to your room.



Bed Fittings Fixed to Sides of Storage



Centrally Fixed Fittings for clear sides

# Bed Fittings

## Bed Fitting Frame



### Technical Specification

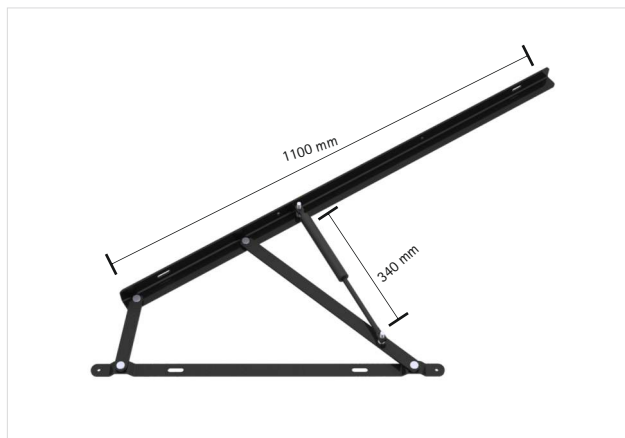


- ▶ Perfect Storage & Space saving
- ▶ Large opening for easy access under the bed
- ▶ Opening from the side or foot of the bed is workable
- ▶ Convenience of use
- ▶ Noiseless and effortless operation
- ▶ International quality mechanism
- ▶ Black Powder Coated finish
- ▶ Backed by Hepo assurance
- ▶ Gas Spring: Passed SGS Test Reliable
- ▶ Quality Effortless Operation
- ▶ Frame Material : Q235
- ▶ Frame Thickness: 4 mm
- ▶ Gas Spring Material: Steel
- ▶ Finish: Powder Coated Black color

Set includes:

- ▶ 1 pair of Bed lift mechanism,
- ▶ Mounting screws & nuts pack
- ▶ 1 installation manual

### Bed Fitting Frame - 1100 mm



- ▶ Frame Material : Q235
- ▶ Frame Thickness : 4 mm
- ▶ Finish: Powder Coated Black color
- ▶ Compatible with Gas Spring of 340 mm length
- ▶ Weight carrying capacity of compatible Gas Spring: 70kg / 100kg



Description	Article no.	Unit	PU	MRP/Set
Bed Fitting Frame - 1100 mm	9304139	Set	1	2,764
Gas Spring 340 mm / 70Kg	9282630	Set	1	788
Gas Spring 340 mm / 100Kg	9282631	Set	1	788

### Bed Fitting Frame - 1500 mm



- ▶ Frame Material : Q235
- ▶ Frame Thickness : 4 mm
- ▶ Finish: Powder Coated Black color
- ▶ Compatible with Gas Spring of 340 mm length
- ▶ Weight carrying capacity of compatible Gas Spring: 120kg/150kg



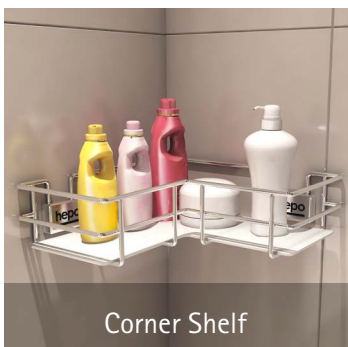
Description	Article no.	Unit	PU	MRP/Set
Bed Fitting Frame - 1500 mm	9304140	Set	1	3,193
Gas Spring 340 mm / 120Kg	9282633	Set	1	788
Gas Spring 340 mm / 150Kg	9296534	Set	1	1,362

\* Gas Spring set to be ordered as per required weight capacity

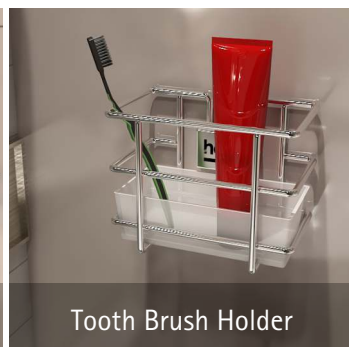
\* Packaging: Each Bed Fitting and gas spring Set in a separate carton box

Note: MRP are subject to change any time without prior notice.

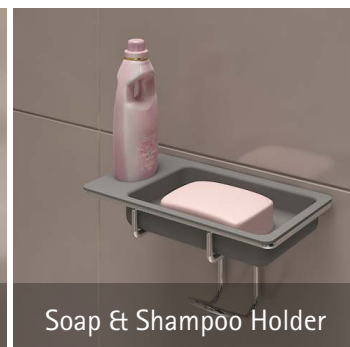
# Bathroom Accessories



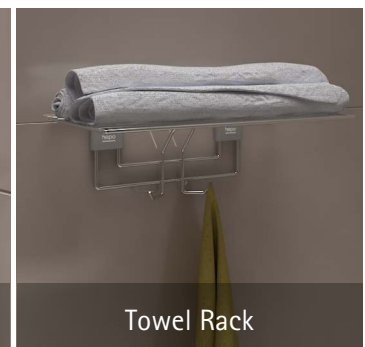
Corner Shelf



Tooth Brush Holder



Soap & Shampoo Holder



Towel Rack



Tissue Roll Holder



Towel Rail



Clothes Hook



Accessory Shelf



Hand Towel Holder

Hepo takes the definition of a contemporary bathroom a step ahead with its exquisite range of bathroom accessories that impart a sense of style and convenience to bathrooms. The range consists of a set of accessories that provide holistic solutions to every possible storage need in the bathroom. The accessories not only add on style to your bathroom but also enhance the level of convenience.

## Bathroom Accessories

**Stainless steel** accessories with chrome plating  
5 years replacement warranty against rusting

# hepo



### Towel Rail



Hepo Stainless Steel Towel Rails adds a refined touch to the bathroom. It is a cool practical home addition that keeps your towel dry that keeps the sick humid stink at bay. A must for your bathroom, they add the right glamour touch & keep your bathroom free of damp breeding ground for germs and mold.

- ▶ Package contains 1 towel rail, 2 cover caps & 5 wall fixing screws
- ▶ Can hold 2 hand towels

Description	Article No.	Size (WxDxH) mm	MRP/Pc
Towel Rail - 350 mm	9280378	350x100x100	852

### Towel Rack



Hepo wall mounted Towel Rack adds the right stylish element to your bathroom. It lets you stack your towels neatly on to it which looks good, gives you great comfort & keeps your bathroom hygienic too!

- ▶ Package contains 1 towel rack, 2 cover caps & 5 wall fixing screws
- ▶ Can hold 3 folded towels on the surface & 3 towels or clothes can be hung

Description	Article No.	Size (WxDxH) mm	MRP/Pc
Towel Rack - 450 mm	9280377	450x250x150	2,466

### Clothes Hook



Hepo Clothes Hook is a fascinating and convenient clothes holder fashioned to hold the clothes in the bathroom in style. The product puts an end to the unsightly picture of used and unused clothes lying around, in the bathroom by giving a compact place to hang them.

- ▶ Package contains 1 cloth hook, 2 cover caps & 5 wall fixing screws
- ▶ Can hold 9 nos of clothes or full size towels

Description	Article No.	Size (WxDxH) mm	MRP/Pc
Clothes Hook	9280371	447x55x133	1,138



## Bathroom Accessories

**Stainless steel** accessories with chrome plating  
5 years replacement warranty against rusting

# hepo



### Accessory Shelf



Hepo Accessory Shelf has been modelled to hold daily use assortments. When added to the bathroom ensemble, the linear designed shelf adds a subtle refined touch.

- ▶ Package contains 1 accessory shelf, 1 plastic tray, 2 cover caps & 5 wall fixing screws
- ▶ Can hold a variety in bottles of different sizes

Description	Article No.	Size (WxDxH) mm	MRP/Pc
Accessory Shelf - W300	9280369	300x100x120	1,043
Accessory Shelf - W450	9280370	450x100x120	1,232

### Corner Shelf



Hepo Corner Shelf is a sleek corner unit that can hold multiple essential stuff. The product enhances storage space with its L shape component not only in your bathroom but can also be used in other corners of your beautiful house.

- ▶ Package contains 1 corner shelf, 1 plastic tray, 2 cover caps & 5 wall fixing screws
- ▶ Can hold a variety of bottles in different sizes with other articles as well

Description	Article No.	Size(WxDxH) mm	MRP/Pc
Corner Shelf	9280372	300x300x120	1,328

### Hand Towel Holder



Hepo Hand Towel Holder is a charming accessory geared to store the towels. The product helps to retain a high level hygiene factor in the bathroom by keeping the towels dry and gives a pleasant contemporary twist to the bathroom landscape.

- ▶ Package contains 1 hand towel holder, 1 cover cap & 3 wall fixing screws
- ▶ Can hold 2 hand towels

Description	Article No.	Size(WxDxH) mm	MRP/Pc
Hand Towel Holder - 220 mm	9280373	220x70x100	568

## Bathroom Accessories

**Stainless steel** accessories with chrome plating  
5 years replacement warranty against rusting

# hepo



### Tooth Brush Holder



Hepo stainless steel Tooth Brush Holder adds the right ambivalent touch to your bathroom, saves the unnecessary utilization of space by toothbrush containers on the basin.

- ▶ Package contains 1 tooth brush holder, 1 plastic tray, 1 cover cap & 3 wall fixing screws
- ▶ Can hold 4-6 toothbrushes, tongue cleaner & 1 toothpaste tube / mouth freshener

Description	Article No.	Size (WxDxH) mm	MRP/Pc
Tooth Brush Holder	9280376	150x100x70	757

### Soap & Shampoo Holder



Hepo Soap & Shampoo Holder is another accessory from Hepo that allows you to place your favourite shampoo and soap in a way that is conveniently accessible. The holder prevents the wastage of space on the floor or open spaces that may be taken up in absence of the wall mounted holder.

- ▶ Package contains 1 soap holder, 1 plastic tray, 1 cover cap & 3 wall fixing screws
- ▶ Can hold 1 soap and 1 shampoo bottle or shower gel bottom hook can be hold loofah or bath scrubber

Description	Article No.	Size (WxDxH) mm	MRP/Pc
Soap & Shampoo Holder	9280374	200x115x125	948

### Tissue Roll Holder



Hepo Tissue Roll Holder with plastic tray is a suave product that must find a place in all modern bathrooms to maintain that elite factor besides maintaining hygiene within. It rolls the tissues well that comes out with ease while in use.

- ▶ Package contains 1 tissue roll holder, 1 plastic tray, 1 cover cap & 3 wall fixing screws
- ▶ Can hold 1 tissue roll and some other articles on plastic tray

Description	Article No.	Size (WxDxH) mm	MRP/Pc
Tissue Roll Holder	9280375	200x105x110	1,138

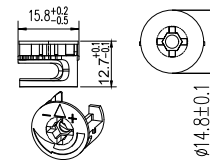
# Connecting Fittings

## Cam, Steel Dowel & Socket

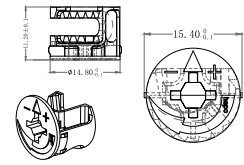


### Cam

- Technical Detail:
- ▶ Drilling diameter 15 mm
  - ▶ Drilling depth: 13 mm for Zinc CAM 15/18  
11.2 mm for Zinc CAM 15/15
  - ▶ Available for 15/18 mm panel thickness
  - ▶ Surface material: Nickel Plating



Zinc CAM 15/18

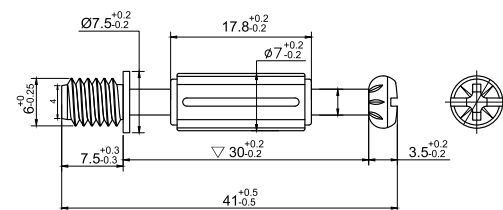


Zinc CAM 15/15

Description	Unit	Article no	PU	MRP/Pc
Zinc Cam 15/18D-NI, Allen & PH	Pc	9290887	3000	6.45
Zinc Cam 15/15- Zinc CAM	Pc	9299651	3000	4.90

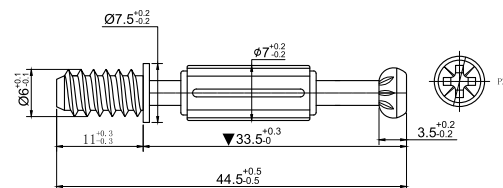
### Steel Dowel

- Technical Detail:
- ▶ M6\*7.5 mm thread
  - ▶ Dowel Length: 30 mm
  - ▶ Available with unmovable gray plastic part



Description	Unit	Article no	PU	MRP/Pc
M6*34 Dowel, 3 in one, PZ2, Galvanizing	Pc	9289656	3000	2.25

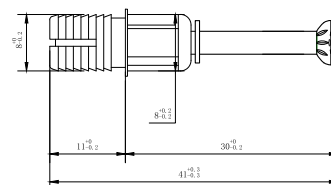
- ▶ Steel dowel with direct fixing thread for drilling diameter of 6 mm
- ▶ Dowel length: 30 mm



Description	Unit	Article no	PU	MRP/Pc
Steel Dowel Euro Thread, 30 mm	Pc	9299653	3000	2.75

### Fast Assembly Dowel

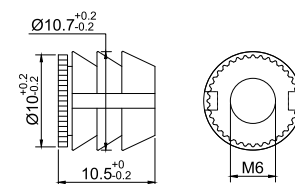
- ▶ Available with expanding socket with 8 mm drilling diameter
- ▶ Dowel length: 30 mm



Description	Unit	Article no	PU	MRP/Pc
Fast Assembly Steel Dowel, 30 mm	Pc	9299654	3000	3.25

### Socket

- ▶ Inner thread: M6
- ▶ Drilling diameter 10 mm
- ▶ Drilling depth: 11.5 mm
- ▶ Available for 15/18 mm panel thickness
- ▶ Finish: White



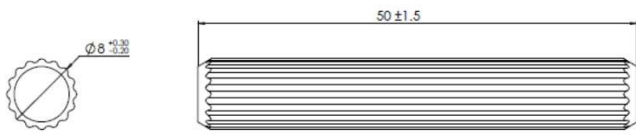
Description	Unit	Article no	PU	MRP/Pc
Nylon Socket, Ø10.8x11, Inner M6 hole	Pc	9289732/ 9304875	3000	0.80

# Connecting Fittings

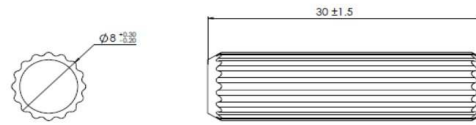
## Wooden Dowel, Hex Metal Socket ZP



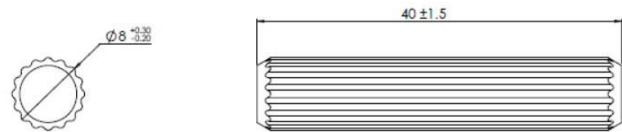
### Wooden Dowel



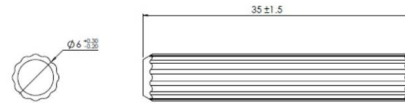
Wooden Dowel 8x50mm



Wooden Dowel 8x30mm



Wooden Dowel 8x40mm



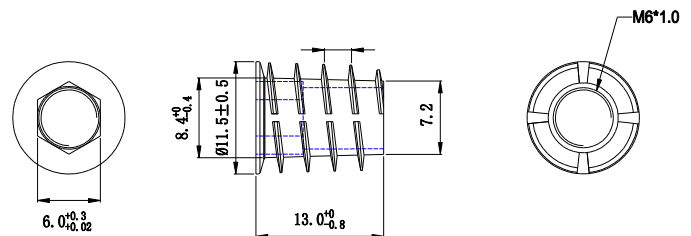
Wooden Dowel 6x35mm

Description	Unit	Article no	PU	MRP/Pc
Wooden Dowel 8.0x40mm	Pc	9102465	2000	0.92
Wooden Dowel 8.0x30mm	Pc	9290706	2000	1.00
Wooden Dowel 8.0x50mm	Pc	9290707	2000	1.40
Wooden Dowel 6.0x35mm	Pc	9290708	2000	1.00

### Hex Metal Socket ZP



Material used: Zinc Alloy  
Drive: Hex Socket



Hex Metal socket M6x13

Description	Unit	Article no	PU	MRP/Pc
Hex Metal socket M6x13 ZP	Pc	9290695	6000	3.75
Hex Metal socket M6x15 ZP	Pc	9290696	6000	4.10
Hex Metal socket M6x20 ZP	Pc	9290698	4500	5.50
Hex Metal socket M8x18 ZP	Pc	9290702	3500	5.90

# Connecting Fittings

## D- Nut (Steel) & Insert Socket full threaded L-Bracket



### D-Nut (Steel)



- ▶ Material used: Steel
- ▶ Available in HEX drive
- ▶ Available in Regular/Metric thread
- ▶ Available Finish: Chrome, Blue zinc (ZP, Cr3+)
- ▶ Available with bulk packing
- ▶ Tested for 48 Hrs Salt Spray against rusting

Stell screw nut					
Data	M6*13	M6*15	M6*18	M6*20	M6*25
A(L)	13 <sup>+1</sup> <sub>-1</sub>	15 <sup>+1.5</sup> <sub>-1.5</sub>	18 <sup>+1.5</sup> <sub>-1.5</sub>	20 <sup>+1.5</sup> <sub>-1.5</sub>	25 <sup>+1.5</sup> <sub>-1.5</sub>
B(D)	11.8 <sup>+0.5</sup> <sub>-0.5</sub>	11.8 <sup>+0.5</sup> <sub>-0.5</sub>	11.8 <sup>+0.5</sup> <sub>-0.5</sub>	11.8 <sup>+0.5</sup> <sub>-0.5</sub>	11.8 <sup>+0.5</sup> <sub>-0.5</sub>
C(D)	10.5 <sup>+0.5</sup> <sub>-0.5</sub>	10.5 <sup>+0.5</sup> <sub>-0.5</sub>	10.5 <sup>+0.5</sup> <sub>-0.5</sub>	10.5 <sup>+0.5</sup> <sub>-0.5</sub>	10.5 <sup>+0.5</sup> <sub>-0.5</sub>
D(inne hex)	6.1 <sup>+0.2</sup> <sub>-0.2</sub>	6.1 <sup>+0.2</sup> <sub>-0.2</sub>	6.1 <sup>+0.2</sup> <sub>-0.2</sub>	6.1 <sup>+0.2</sup> <sub>-0.2</sub>	6.1 <sup>+0.2</sup> <sub>-0.2</sub>

Steel screw nut					
data	M8*13*12.5	M8*15*12.5	M8*18*12.5	M8*20*12.5	M8*25*12.5
A (Length)	13 <sup>+1</sup> <sub>-1</sub>	15 <sup>+1.5</sup> <sub>-1.5</sub>	18 <sup>+1.5</sup> <sub>-1.5</sub>	20 <sup>+1.5</sup> <sub>-1.5</sub>	25 <sup>+1.5</sup> <sub>-1.5</sub>
B (Diameter)	14 <sup>+0.5</sup> <sub>-0.5</sub>	14 <sup>+0.5</sup> <sub>-0.5</sub>	14 <sup>+0.5</sup> <sub>-0.5</sub>	14 <sup>+0.5</sup> <sub>-0.5</sub>	14 <sup>+0.5</sup> <sub>-0.5</sub>
C (Diameter)	12.5 <sup>+0.5</sup> <sub>-0.5</sub>	12.5 <sup>+0.5</sup> <sub>-0.5</sub>	12.5 <sup>+0.5</sup> <sub>-0.5</sub>	12.5 <sup>+0.5</sup> <sub>-0.5</sub>	12.5 <sup>+0.5</sup> <sub>-0.5</sub>
D (inner hex)	8.08 <sup>+0.2</sup> <sub>-0.2</sub>	8.08 <sup>+0.2</sup> <sub>-0.2</sub>	8.08 <sup>+0.2</sup> <sub>-0.2</sub>	8.08 <sup>+0.2</sup> <sub>-0.2</sub>	8.08 <sup>+0.2</sup> <sub>-0.2</sub>

Metal socket - Steel	Dimension	Unit	Article No.	PU	MRP/Pc
D-Nut(Steel) M6x13, ZP Cr3+	M6x13	Pc	9296712	3500	2.50
D-Nut(Steel) M6x15, ZP Cr3+	M6x15	Pc	9296713	3000	2.75
D-Nut(Steel) M6x18, ZP Cr3+	M6x18	Pc	9296714	2500	3.15
D-Nut(Steel) M6x20, ZP Cr3+	M6x20	Pc	9296715	2500	3.35
D-Nut(Steel) M6x25, ZP Cr3+	M6x25	Pc	9296716	2000	4.15
D-Nut(Steel) M8x13, ZP Cr3+	M8x13	Pc	9296717	3000	3.05
D-Nut(Steel) M8x15, ZP Cr3+	M8x15	Pc	9296718	2500	3.35
D-Nut(Steel) M8x18, ZP Cr3+	M8x18	Pc	9296719	2000	3.65
D-Nut(Steel) M8x20, ZP Cr3+	M8x20	Pc	9296720	2000	4.15
D-Nut(Steel) M8x25, ZP Cr3+	M8x25	Pc	9296721	1500	4.95

### L-Bracket

S.No.	Description	Image	Unit	Article No.	PU	MRP/Pc
1	L-Bracket 31x31 mm		Pc	79665	1000	15
2	L-Bracket 41x41 mm		Pc	25197	100	16

# Connecting Fittings

## Leveller Screws



### Leveller Screws

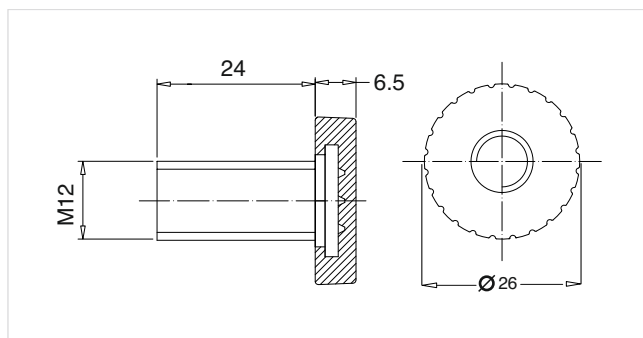
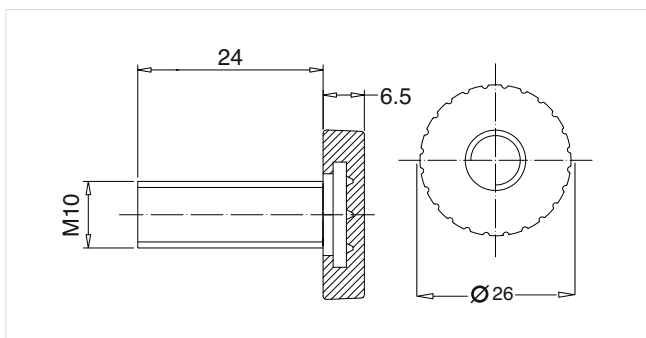
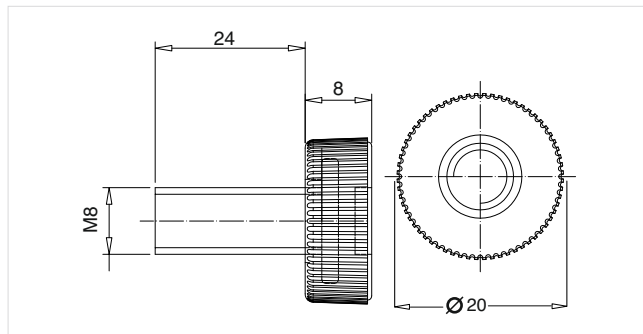
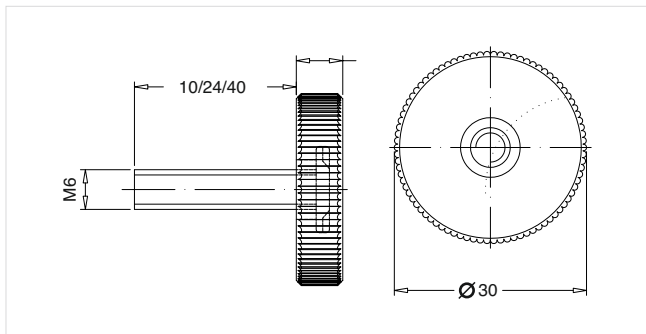


- Technical details:
- ▶ Used for height adjustment of cabinets
  - ▶ Material used: Zinc plated aluminium, High quality plastic
  - ▶ Finish: Zinc chrome plated, Black plastic

### Product Dimension

Rod Dia. (mm)	Rod Length (mm)	Base Dia. (mm)	Base Height (mm)
M6	10/ 24/ 40	30	7
M8	24	20	8
M10	24	26	6.5
M12	24	26	6.5

### Dimensional Diagram



Product description	Weight capacity	Unit	Article no.	PU	MRP/Pc
Leveller screw M6 x 10 mm	60 Kg	Pc	9138921	1000	9.50
Leveller screw M6 x 24 mm	60 Kg	Pc	9138922	1000	10.50
Leveller screw M6 x 40 mm	60 Kg	Pc	9138923	1000	11.75
Leveller screw M8 x 24 mm	70 Kg	Pc	9138924	1000	12
Leveller screw M10 x 24 mm	80 Kg	Pc	9138925	500	16
Leveller screw M12 x 24 mm	90 Kg	Pc	9138926	500	22

## Screws

HePo offers wide range of screws in India ideally suitable for all type of wood, plastic, masonry and sheet metal.

HePo provides complete range of woodworking and building and construction screw i.e. Chipboard screw, Drywall screws (black phosphate), Self-drilling screws, Handle fixing screws, Truss head and roofing screws. HePo screws are made from hardened steel. What differentiates HePo screws from other available in market are:

**Saw Thread** - Gives better and faster cutting strength for the screw inside the material. Thus, a carpenter has to use less force and effort during drilling.

**Pozi Drive** - It has eight times better grip than a slotted head and two times better than Philips head, allowing greater torque.

**Sharp Tip** - Optimized tip geometry for better positioning and stacking of the screw, even on hard surface

**High Thread Pitch** - Gives faster drive and better contact with the substrate thereby reducing the time of installation.

**Packaging** - HePo screws are available in different pack sizes i.e. bulk/retail/small pack as per the customer needs.

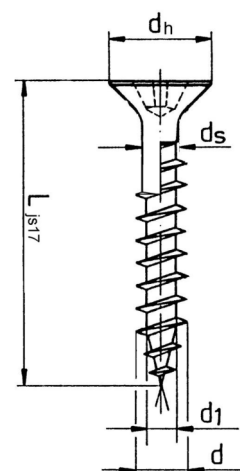
**Available Screws** - Zinc Coated, Stainless Steel, Blackodized, Special Screws & Accessories

Pozi Drive Head provide a greater driving surface & decrease wear

Saw thread for faster cutting strength of the screw inside material

Toothed thread design for minimal driving torque

Sharp tip for improved positioning and starting on hard surfaces

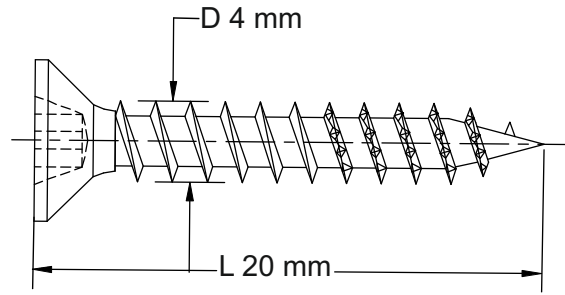


$d$  : Thread diameter  
 $d_1$  : Core diameter  
 $d_s$  : Shank diameter  
 $L$  : Screw length  
 $d_h$  : Head diameter

## Naming Convention for Chipboard Screws

Consider 4 x 20

4 is the diameter of the thread in 'mm'(Including the thread)  
20 is the length of the screw in 'mm'



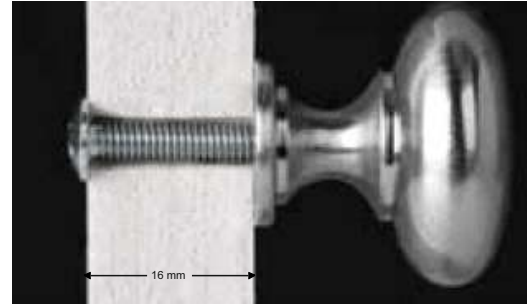
## Naming Convention for Machine Screws

Consider M4x26

4 is the diameter in 'mm'  
26 is the length of the screw in 'mm'

Specifying the Screw:

Panel thickness + 6 mm to pierce into the handle  
e.g: For a 16 mm Panel, 22 mm screw length can be suggested to fix a handle, knob etc



## Screws : Nomenclature

As per Screw Heads

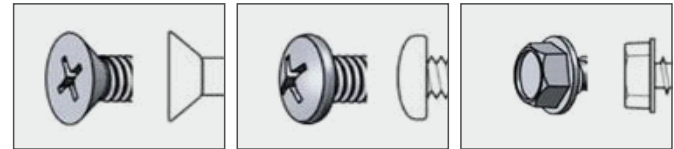


Slotted Head

Phillips Head

Pozi Drive

As per Screw Head Shape



Countersunk Head

Pan Head

Hexagonal Head

Indian Market follows imperial system (Gauge & Inch) Which allows suppliers to sell shorter screws against any required size

## Conversion Chart- Imperial System to Metric System

Diameter		Length	
Gauge No.	mm	Inch	mm
2	2	1/4	6
3	2.5	3/8	10
4	3	1/2	12
5	3	5/8	16
6	3.5	3/4	20
7	4	1	25
8	4	1 1/4	30
9	4.5	1 1/2	40
10	5	1 3/4	45
12	5.5	2	50
12	6	2 1/4	55
14	8	2 1/2	60
		2 3/4	70
		3	75
		3 1/2	90
		4	100
		4 1/2	110
		5	130
		6	150

Note: There is tradition of citing screw diameter in gauge & screw length in inches



# Screw Portfolio

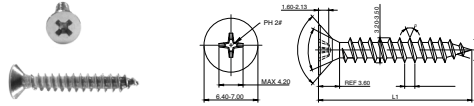
Screws	Page No.
<b>Stainless Steel Screws</b>	
CSK Saw Thread Magnetic & Non-magnetic Screw	32
<b>Carbon Steel Screws</b>	
CSK Saw Thread Screw	33
Pan Head Saw Thread Screw	34
Self Drilling Screw with Rib	35
Hexagonal Head Self Drilling Screw with Washer	35
Handle Fixing Screw	35
<b>Black Screws</b>	
Blackodised CSK Chipboard Screw	36
Blackodised Pan Head Chipboard Screw	36
Drywall Screw	37
Truss Head Screw	37
<b>Special Purpose Screws</b>	
Countersunk Full Thread Screw	38-41
<b>Accessories</b>	
Drive Bit & Screw Driver	42

# Stainless Steel Screws

## CSK Saw Thread Magnetic & Non-Magnetic Screw



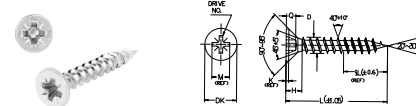
### CSK Saw Thread Non-Magnetic Philips Drive Screw



Material : SS Drive : Philips  
 Finish : Stainless Steel Thread : Saw  
 Head : Countersunk Packing : Retail

#### Philips Drive

### CSK Saw Thread Magnetic Pozi Drive Screw



Material : SS Drive : Pozi  
 Finish : Stainless Steel Thread : Saw  
 Head : Countersunk Packing : Retail

#### Pozi Drive

S.No.	Dimension	Size
1	Ø3.5x12	12/6
2	Ø3.5x16	16/6
3	Ø3.5x20	20/6
4	Ø3.5x25	25/6
5	Ø3.5x30	30/6
6	Ø3.5x35	35/6
7	Ø4.0x16	16/8
8	Ø4.0x20	20/8
9	Ø4.0x25	25/8
10	Ø4.0x30	30/8
11	Ø4.0x35	35/8
12	Ø4.0x40	40/8
13	Ø4.0x50	50/8
14	Ø5.0x50	50/10
15	Ø5.0x60	60/10
16	Ø5.0x70	70/10
17	Ø5.0x80	80/10
18	Ø5.0x100	100/10
19	Ø6.0x120	100/12
20	Ø6.0x140	140/12

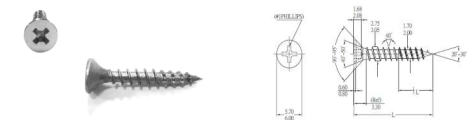
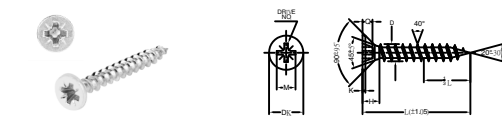
Article No.	Unit	PU	MRP/100
928814100	Pc	1000	78
928814200	Pc	1000	89
928814300	Pc	1000	99
928814400	Pc	1000	119
928814500	Pc	1000	139
928814600	Pc	1000	149
928814700	Pc	1000	103
928814800	Pc	1000	127
928814900	Pc	1000	151
928815000	Pc	1000	175
928815100	Pc	500	195
928815200	Pc	500	222
929129500	Pc	500	275
928815300	Pc	500	409
928815400	Pc	200	479
928815500	Pc	200	579
929129600	Pc	200	680
929129700	Pc	100	855
929129800	Pc	100	1665
929129900	Pc	100	1935

Article No.	Unit	PU	MRP/100
916238200	Pc	1000	107
915445200	Pc	1000	121
916238300	Pc	1000	139
916238400	Pc	1000	169
916238500	Pc	1000	183
916238600	Pc	1000	214
916238800	Pc	1000	154
915445300	Pc	1000	176
915445400	Pc	1000	209
915445500	Pc	1000	242
915445600	Pc	500	264
916238900	Pc	500	315
-	-	-	-
915445900	Pc	200	592
916939400	Pc	200	726
915446101	Pc	200	760
-	-	-	-
-	-	-	-
-	-	-	-
-	-	-	-

# Carbon Steel Screw

## CSK Saw Thread Screw


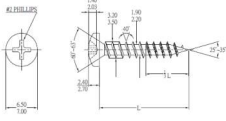

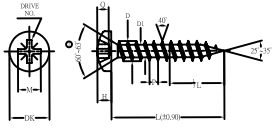


				CSK Saw Thread Philips Drive Screw				CSK Saw Thread Pozi Drive Screw			
											
				Material : Steel Finish : Zinc Coated Head : Countersunk		Drive : Philips Thread : Saw Packing : Retail		Material : Steel Finish : Zinc Coated Head : Countersunk		Drive : Pozi Thread : Saw Packing : Retail	
				Philips Drive				Pozi Drive			
S.No.	Dimension	Size	Article No.	Unit	PU	MRP/100	Article No.	Unit	PU	MRP/100	
1	Ø3 x 10	10/5	-	-	-	-	916936900*	Pc	1000	62*	
2	3.0x12	12/5	928903800	Pc	1000	36	916237800	Pc	1000	85	
3	3.0x16	16/5	928908900	Pc	1000	42	916937000	Pc	1000	88	
4	3.5x12	12/6	928909400	Pc	1000	47	914809200	Pc	1000	89	
5	3.5x16	16/6	928909500	Pc	1000	50	913798000	Pc	1000	91	
6	3.5x20	20/6	928909600	Pc	1000	59	915382000	Pc	1000	96	
7	3.5x25	25/6	928909800	Pc	1000	63	916237900	Pc	1000	110	
8	3.5x30	30/6	928910000	Pc	1000	69	916238000	Pc	1000	128	
9	3.5x35	35/6	928910100	Pc	900	79	916937100	Pc	1000	130	
10	3.5x40	40/6	928910200	Pc	800	89	916238100	Pc	500	157	
11	4.0x12	12/8	928910300	Pc	1000	50	916937200	Pc	1000	97	
12	4.0x16	16/8	928910400	Pc	800	59	913799200	Pc	1000	112	
13	4.0x20	20/8	928910600	Pc	1000	69	913799100	Pc	1000	115	
14	4.0x25	25/8	928910700	Pc	900	77	913799300	Pc	1000	135	
15	4.0x30	30/8	928910800	Pc	800	90	914027200	Pc	1000	147	
16	4.0x35	35/8	928911000	Pc	600	104	914027400	Pc	500	176	
17	4.0x40	40/8	928911200	Pc	600	116	914027500	Pc	500	187	
18	4.0x45	45/8	928911400	Pc	500	129	914027600	Pc	500	203	
19	4.0x50	50/8	928911600	Pc	400	141	916937300	Pc	500	211	
20	5.0x50	50/10	928911700	Pc	300	232	914809300	Pc	200	394	
21	5.0x60	60/10	928911800	Pc	200	270	915382100	Pc	200	451	
22	5.0x70	70/10	928911900	Pc	200	320	915382200	Pc	200	526	
23	5.0x80	80/10	928912000	Pc	200	360	916937600	Pc	100	645	
24	5.0x90	90/10	928912100	Pc	100	405	916937800	Pc	100	775	
25	5.0x100	100/10	928912200	Pc	100	445	916938000	Pc	100	894	

# Carbon Steel Screw

## Pan head Saw Thread Screw



Pan Head Saw Thread Philips Drive Screw						Pan Head Saw Thread Pozi Drive Screw					
 		Material : Steel		Drive : Philips		 		Material : Steel		Drive : Pozi	
		Finish : Zinc Coated		Thread : Saw				Finish : Zinc Coated		Thread : Saw	
		Head : Pan Head		Packing : Retail				Head : Countersunk		Packing : Retail	
Philips Drive						Pozi Drive					
S.No.	Dimension	Size	Article No.	Unit	PU	MRP/100	Article No.	Unit	PU	MRP/100	
1	Ø3.0 x 12	-	-	-	-	-	916938100	Pc	1000	69	
2	Ø3.0 x 16	-	-	-	-	-	916938200	Pc	1000	75	
3	Ø3.5 x 12	12/6	928912300	Pc	20000	37	916938300	Pc	1000	72	
4	Ø3.5 x 16	16/6	928912400	Pc	16000	39	916938400	Pc	1000	75	
5	Ø3.5 x 20	-	-	-	-	-	916938500	Pc	1000	83	
6	Ø4.0 x 16	-	-	-	-	-	913799900	Pc	1000	82	
7	Ø4.0x20	16/8	928912500	Pc	11000	45	-	-	-	-	
8	Ø4.0 x 25	20/8	928912600	Pc	10000	53	914028200	Pc	1000	101	
9	Ø4.0 x 30	-	-	-	-	-	916938600	Pc	500	130	
10	Ø4.0 x 35	-	-	-	-	-	916938700	Pc	500	147	
11	Ø4.0 x 40	-	-	-	-	-	916938800	Pc	500	162	
12	Ø4.0 x 45	-	-	-	-	-	916938900	Pc	200	178	
13	Ø4.0 x 50	-	-	-	-	-	916939000	Pc	200	196	
14	Ø4.5 x 16	-	-	-	-	-	913800000	Pc	500	108	
15	Ø4.5 x 20	-	-	-	-	-	913802100	Pc	500	118	
16	Ø5.0 x 50	-	-	-	-	-	916939100	Pc	200	296	
17	Ø6.0 x 35	-	-	-	-	-	916939200	Pc	200	339	
18	Ø6.0 x 50	-	-	--	-	-	916939300	Pc	200	437	



# Black Screws

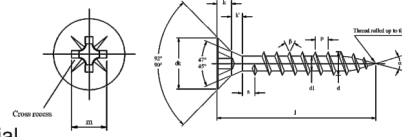
## CSK & Pan Head Regular Thread Chipboard Screws



### Blackodised CSK Chipboard Screw



Material : Steel  
 Finish : Blackodised  
 Head : Countersunk  
 Drive : Pozi  
 Thread : Regular  
 Packing : Retail/Industrial

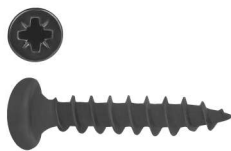


#### Retail Packing

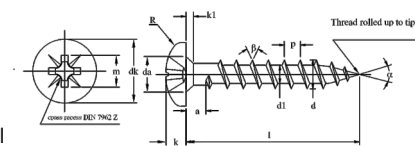
#### Industrial Packing

S.No.	Dimension	Size	Article No.	Unit	PU	MRP/100	Article No.	Unit	PU	MRP/100
1	Ø3 X16	16/5	541212030	Pc	1000	48*	-	-	-	-
2	Ø3.5 x 12	12/6	541212040	Pc	1000	49*	921510800	Pc	31000	34
3	Ø3.5 x 16	16/6	541212050	Pc	1000	60	921510900	Pc	25000	38
4	Ø3.5 x 20	20/6	541212060	Pc	1000	63	921511000	Pc	22000	42
5	Ø3.5 x 25	25/6	541212070	Pc	1000	66	921511100	Pc	17000	51
6	Ø3.5 x 30	30/6	541212080	Pc	1000	74	921511200*	Pc	14500	58*
7	Ø3.5 x 35	35/6	541212090	Pc	1000	82	-	-	-	-
8	Ø4.0 x 16	16/8	541212120	Pc	1000	66	923663900	Pc	19000	54
9	Ø4.0 x 20	20/8	541212130	Pc	1000	74	923664100*	Pc	16000	62*
10	Ø4.0 x 25	25/8	541212140	Pc	1000	82	923664200*	Pc	13000	69*
11	Ø4.0 x 30	30/8	541212150	Pc	1000	96	923664300*	Pc	11000	85*
12	Ø4.0 x 35	35/8	541212160	Pc	500	109	923664400	Pc	10000	97
13	Ø4.0 x 40	40/8	541212170	Pc	500	121	921511300	Pc	8000	86
14	Ø4.0 x 45	45/8	541212180*	Pc	500	131*	-	-	-	-
15	Ø4.0 x 50	50/8	541212190	Pc	500	146	-	-	-	-
16	Ø5.0 x 50	50/10	541212230	Pc	200	231	921511400*	Pc	4500	157*
17	Ø5.0 x 60	60/10	541212240	Pc	200	268	-	-	-	-
18	Ø5.0 x 70	70/10	541212250	Pc	200	313	-	-	-	-

### Blackodised Pan Head Chipboard Screws



Material : Steel  
 Finish : Blackodised  
 Head : Pan Head  
 Drive : Pozi  
 Thread : Regular  
 Packing : Retail/Industrial



#### Retail Packing

#### Industrial Packing

S.No.	Dimension	Size	Article No.	Unit	PU	MRP/100	Article No.	Unit	PU	MRP/100
1	Ø3.5 x 12	12/6	541222040	Pc	1000	62	921511500	Pc	22000	43
2	Ø3.5 x 16	16/6	541222050	Pc	1000	77	921511600	Pc	20000	45
3	Ø3.5 x 25	25/6	-	-	-	-	921512700	Pc	15000	56
4	Ø4 x 16	16/8	541222120	Pc	1000	94	923664600	Pc	15000	73
5	Ø4 x 20	20/8	541222130	Pc	1000	102	923664700	Pc	12000	82
6	Ø4 x 25	25/8	541222140	Pc	1000	113	923664800	Pc	10000	91
7	Ø4 x 30	30/8	541222150	Pc	500	127	923664900	Pc	9000	105
8	Ø4 x 35	35/8	-	-	-	-	923665000	Pc	8000	114
9	Ø4 x 40	40/8	-	-	-	-	923665100	Pc	7000	126
10	Ø4 x 50	50/8	-	-	-	-	923665200	Pc	5500	149

# Black Screws

## Drywall Screw & Truss Head Screws



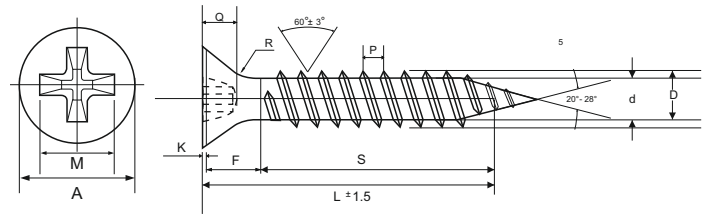
### Drywall Screw - Retail Packing



Material : Steel  
 Finish : Black  
 Drive : Phillips Drive  
 Thread : Fine Thread  
 Packing : Retail

S.No.	Dimension	Size	Article No.	Unit	PU	MRP/100
1	3.5x20	20/6	926247900	Pc	1000	51
2	3.5x25	25/6	926248000	Pc	1000	59
3	3.5x30	30/6	926251100	Pc	1000	71
4	3.5x35	35/6	926251200	Pc	1000	79
5	3.5x40	40/6	926251300	Pc	500	85
6	3.5x45	45/6	926251400	Pc	500	96
7	3.5x50	50/6	926251500	Pc	500	105

Dimension Drawing



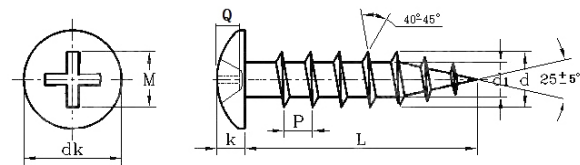
Details	Head Dia. A	F	Major Dia. D	Minor Dia. d	K	Pitch P	Recess Depth Q	R	Recess Width M	N	Torque Nm
#6 (3.5 mm)	8	4.5	3.4	2	0.5	1.4	2.55	4.5	4.5	0.81	2.8 min
	8.5	7	3.6	2.3	0.8	1.7	2.93	5	5.1		

### Truss Head screws in Retail Packing



Material : Steel  
 Finish : Black  
 Head : Truss Head  
 Drive : Philips  
 Thread : Regular  
 Packing : Retail

S.No.	Dimension	Size	Article No.	Unit	PU	MRP/100
1	Ø4.0 x 13	13/8	928060300	Pc	1000	50
2	Ø4.0 x 16	16/8	928060400	Pc	1000	52
3	Ø4.0 x 20	20/8	928060500	Pc	1000	65
4	Ø4.0 x 25	25/8	928060600	Pc	1000	78
5	Ø4.0 x 30	30/8	928060700	Pc	1000	91
6	Ø4.0 x 40	40/8	928060800	Pc	500	116
7	Ø4.0 x 50	50/8	928060900	Pc	500	142
8	Ø5.0 x 50	50/10	928061000	Pc	500	225



Tolerance Size	H+/-0.5	Q	K (REF.)	d1	d	P	M+/-0.5	DK	Drive no.	Breaking Torque (Min)	L
M4	4	2.1	2.2	2.25	3.75	1.69	4.2	8.5	PH2	34	16-50 MM ±1.5
		2.6	2.6	2.5	4	1.91		9			
M5	5	2.1	2.8	2.8	4.7	2.07	4.2	10.8	PH2	62	16-100 MM ±1.5
		2.6	3.2	3.1	5	2.33		11.4			

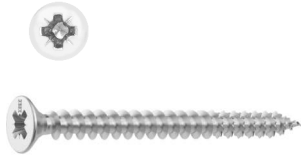
\*Subject to stock availability/ on request basis

# Special Purpose Screws

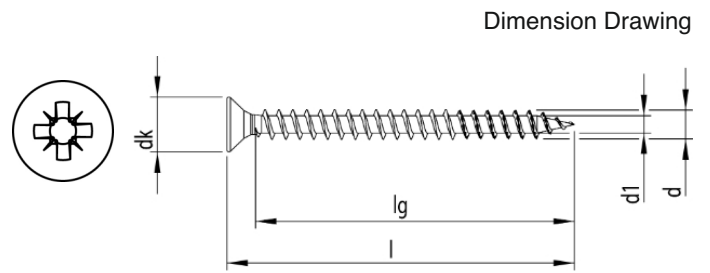
## Countersunk Full Thread Screws



### Zinc Countersunk Full Thread - Retail Packing



Material : Steel hardened  
 Finish : Bright zinc plated  
 Head : Countersunk  
 Drive : Pozi Drive  
 Packing : Retail




S.No.	Dimension	Gauge	Article No.	Unit	PU	MRP/100
1	Ø3.0 x 10	5	118017691 *	Pc	1000	156*
2	Ø3.0 x 12	5	916300400 *	Pc	1000	156*
3	Ø3.5 x 16	6	118002300	Pc	1000	154
4	Ø3.5 x 20	6	916300500	Pc	1000	168
5	Ø3.5 x 25	6	118002100 *	Pc	1000	178*
6	Ø3.5 x 30	6	118002200 *	Pc	1000	193*
7	Ø4.0 x 12	8	118012500 *	Pc	1000	181*
8	Ø4.0 x 16	8	118015100	Pc	1000	181
9	Ø4.0 x 20	8	118016800	Pc	1000	198
10	Ø4.0 x 25	8	118016900	Pc	1000	220
11	Ø4.0 x 30	8	118001700	Pc	1000	242
12	Ø4.0 x 35	8	118017100	Pc	500	286
13	Ø4.0 x 40	8	118002600 *	Pc	500	308*
14	Ø4.0 x 45	8	118001900 *	Pc	500	352*
15	Ø4.0 x 50	8	118001800	Pc	500	399
16	Ø4.5 x 20	9	118002800*	Pc	1000	265*
17	Ø4.5 x 25	9	118044647*	Pc	500	299*
18	Ø4.5 x 30	9	118015951*	Pc	500	318*
19	Ø4.5 x 40	9	118016214*	Pc	500	374*
20	Ø4.5 x 45	9	118016795*	Pc	500	495*
21	Ø4.5 x 50	9	118015299*	Pc	200	508*
22	Ø4.5 X 55	9	918982000*	Pc	200	768*
23	Ø4.5 x 60	9	118016087*	Pc	200	654*
24	Ø4.5 x 70	9	118016958*	Pc	200	894*
25	Ø5.0 x 50	10	922204200	Pc	200	593
26	Ø5.0 x 70	10	118001600	Pc	200	934
27	Ø6.0 x 40	12	118002000	Pc	200	886*

Size (dxl) mm	Thread length lg (mm)	Head diameter dk (mm)
3x12	9	5.9
3.5x16	13	6.9
3.5x20	16	6.9
3.5x25	21	6.9
3.5x30	26	6.9
4x16	12	7.9
4x20	15	7.9
4x25	20	7.9
4x30	25	7.9
4x35	30	7.9
4x40	35	7.9
4x45	40	7.9
4x50	45	7.9
4.5x20	15	8.9
4.5x25	20	8.9
4.5x30	25	8.9
4.5x40	35	8.9
4.5x45	40	8.9
4.5x50	45	8.9
4.5x55	50	8.9
5x50	44	9.6
5x70	60	9.6
6x40	33	11.6

Available on request



Countersunk Head			Hardened Steel		
PRODUCT	DESCRIPTION	FINISH	SIZE		SKU
			Diameter	Length	
	PZD, full threaded	bright zinc plated	3.5-6.0	20-70	33
	PZD, with milling ribs, part threaded	bright zinc plated	3.5-6.0	35-180	27
	PZD, full threaded	yellow zinc plated	3.5-6.0	20-70	33
	PZD, with milling ribs, part threaded	yellow zinc plated	3.5-6.0	35-180	28
	T-Drive, full threaded	bright zinc plated	3.5-6.0	20-70	35
	T-Drive, with milling ribs, part threaded	bright zinc plated	3.5-6.0	30-300	45
	T-Drive, with milling grooves, part threaded	bright zinc plated	8.0-10.0	80-500	41
	T-Drive, full threaded	yellow zinc plated	3.5-6.0	20-70	33
	T-Drive, with milling ribs, part threaded	yellow zinc plated	3.5-6.0	30-300	45
<b>Countersunk head Full threaded screws</b> With milling grooves					
	T-Drive, full threaded	bright zinc plated	8.0-10.0	120-380	21
<b>Flange head screws</b>					
	T-Drive, full threaded	bright zinc plated	6.0-10.0	40-120	11
	T-Drive, part threaded	bright zinc plated	6.0-10.0	100-400	39

Available on request

Countersunk Head Screw - Therm					
PRODUCT	DESCRIPTION	FINISH	SIZE		SKU
			Diameter	Length	
	T-Drive, secondary threaded	bright zinc plated	8.0-10.0	160-500	16
Cylinder Head Screw - CombiConnect					
	T-Drive, double threaded	bright zinc plated	6.5-8.5	100-400	14
Flange Head Connector Screws					
	T-Drive, double threaded	bright zinc plated	10.0	120-160	2
Countersunk Head with Milling Grooves					
	T-Drive, full threaded	bright zinc plated	8.0-10.0	120-180	5
Flange Head Post Screw					
	T-Drive, full threaded	HP-coated	6.0-8.0	40-60	6
Raised Countersunk Head Glass Strip Screw With Milling Ribs					
	T-Drive, part threaded	bright zinc plated	3.5	30-60	5
	T-Drive, part threaded	yellow zinc plated	3.5	30-40	3
Countersunk Head Fitting Screw					
	PZD, full threaded	bright zinc plated	4.5	40	1

Countersunk Head			Stainless steel		
PRODUCT	DESCRIPTION	FINISH	SIZE		SKU
			Diameter	Length	
	PZD, full threaded	A2 self-colour, coated	3.5-5.0	20-70	17
	T-Drive, with milling ribs, part threaded	A2 self-colour, coated	3.5-8.0	30-400	42
<b>Flange Head</b>					
	T-Drive, full threaded	A2 self-colour, coated	6.0-8.0	40-120	11
	T-Drive, part threaded	A2 self-colour, coated	6.0-8.0	100-300	11
<b>Flange Head-T Solar</b>					
	T-Drive, secondary threaded	A2 self-colour, coated	8.0	240-360	3
<b>Raised Countersunk Head Glass Strip Screw With Milling Ribs</b>					
	T-Drive, part threaded	A2 self-colour, coated	3.5	40	1
<b>Countersunk Head Fitting Screw</b>					
	PZD, full threaded	A2 self-colour, coated	4.5	40	1
<b>Countersunk Head Decking Screws</b>			<b>Stainless steel</b>		
<b>Countersunk Head Decking Screws With Milling Ribs</b>					
	T-Drive, part threaded	A2 self-colour, coated	5.0	50-80	4
	T-Drive, part threaded	A2 self-colour, coated	5.0	40-80	5
<b>Raised Countersunk Head Decking Screws</b>					
PRODUCT	DESCRIPTION	FINISH	SIZE		SKU
			Diameter	Length	
	T-Drive, secondary threaded	A2 self-colour, coated	5.0	50-80	4
	T-Drive, secondary threaded	A2 self-colour, coated	5.0	40-80	5

Available on request

# Accessories

## Drive Bit & Screw Driver



### Screw - Drive - Bit Pozi Drive



Material : Steel hardened  
 Finish : Black  
 Drive : Pozi Drive

S.No.	Description	Suitable for	Article No.	Unit	PU	MRP/Pc
1	Pozi Drive Size 1	≤ 3 mm dia	915372300	Pc	10	170
2	Pozi Drive Size 2	3.5 - 5 mm dia	915372600	Pc	10	170
3	Pozi Drive Size 3	≥ 5 mm dia	915372700	Pc	10	170

### Drive Bit - 65 mm (Both Side) Pozi Drive



Material : Steel hardened  
 Finish : Black  
 Drive : Pozi Drive

S.No.	Description	Suitable for	Article No.	Unit	PU	MRP/Pc
1	PZD -1 Screwdrive bits H1/4*65mm PZ1	≤ 3 mm dia	925467100	Pc	10	80
2	PZD -2 Screwdrive bits H1/4*65mm PZ2	3.5 - 5 mm dia	925467200	Pc	10	80
3	PZD -3 Screwdrive bits H1/4*65mm PZ3	≥ 5 mm dia	925467300	Pc	10	80

### Drive Bit - 65mm (Both Side) Phillips Drive



Material : Steel hardened  
 Finish : Black  
 Drive : Phillips Drive

S.No.	Description	Suitable for	Article No.	Unit	PU	MRP/Pc
1	PHD - 2 Screw Drive Bits H1 / 4*65mm PH2	3.5 - 5 mm dia	927324600	Pc	10	80

### Screw Driver



Material : Steel hardened  
 Drive : Pozi Drive

S.No.	Description	Suitable for	Dimension	Article No.	Unit	PU	MRP/Pc
1	Screws Driver	3.5 - 5 mm dia	PZ 2	919326000	Pc	1	200

# Notes

A series of horizontal dotted lines for writing notes.

# Notes

A series of horizontal dotted lines for writing notes.

# Notes

A series of horizontal dotted lines for writing notes.



*Hardware for Professionals*

**Contact Us**

Ahmedabad	9664813232
Bangalore	7338183871
Bhubaneshwar	9938988868
Chennai	9739538886
Coimbatore	8940898037
Delhi	8287257534
Ghaziabad	9910117185
Indore	7869271060
Jaipur	8657512894
Kanpur	8657514175
Karnal	9812282005
Kolkata	8291823966
Lucknow	9696578877
Mumbai	9545876760
Nagpur	9960237771
Patiala	9136016414
Patna	8657505171
Pune	9061936699
Ranchi	8097464013
Vijawada	9704578837

**Registered Office:**

Hepo India Private Limited  
A-26/4, 1st floor,  
Mohan Co-operative Industrial Estate,  
New Delhi - 110 044  
Phone: +91 11 4889 4000, 4889 4005  
Fax: +91 11 4889 4044

**Head Office:**

Hepo India Private Limited  
402, 4th floor, Durolite House,  
Opp. SAB TV, New Link Road,  
Andheri (West), Mumbai - 400 053  
Phone: +91 22 2674 3289/3356/4089  
Fax: +91 22 2674 3267

**Enquiry & Customer Services**

Toll Free : 1800 209 2096 (office hours)  
customer\_services@hepoindia.com  
www.hepoindia.com

